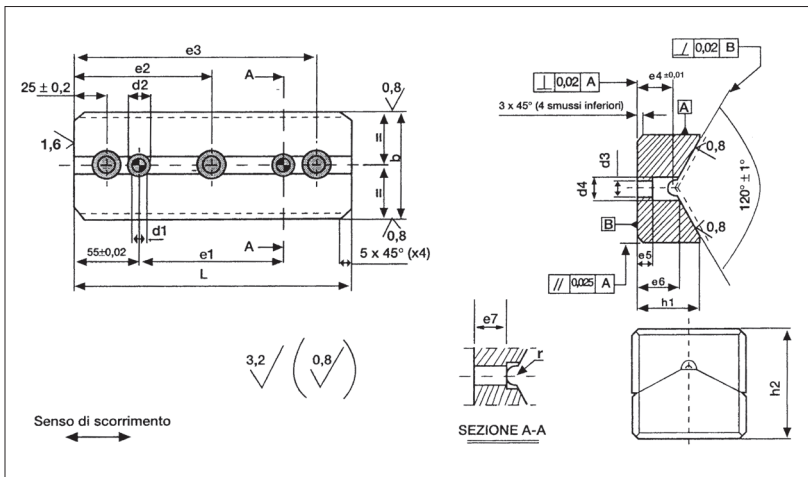
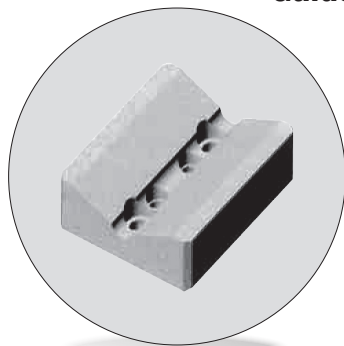


# Guide a "V" in acciaio VDI 3357 "V" driver steel VDI 3357



<b>Codice</b>	<b>Materiale</b>
Cod. <b>A941B</b>	Acciaio; 42CrMo4 (HRC 58-62)

L	b	d <sub>1</sub>	d <sub>2</sub>	d <sub>3</sub>	d <sub>4</sub>	e <sub>1</sub>	e <sub>2</sub>	e <sub>3</sub>	e <sub>4</sub>	e <sub>5</sub>	e <sub>6</sub>	h <sub>1</sub>	h <sub>2</sub>	r	n° fori
150	65	12	14	13,5	20	45		125	18	8	22	35	65	7	2
200	65	12	14	13,5	20	95		175	18	8	22	35	65	7	2
250	65	12	14	13,5	20	145	125	225	18	8	22	35	65	7	3
300	65	12	14	13,5	20	195	150	275	18	8	22	35	65	7	3
150	125	16	20	17,5	26	45		125	28	15	34	60	85	10	2
200	125	16	20	17,5	26	95		175	28	15	34	60	85	10	2
250	125	16	20	17,5	26	145	125	225	28	15	34	60	85	10	3
300	125	16	20	17,5	26	195	150	275	28	15	34	60	85	10	3

Esempio di ordinazione/Order example = A941B - 125x150 (cod + bxL)

**ORDINATIVO PER COPPIA / ORDER FOR SET  
A941A + B + bxL**

