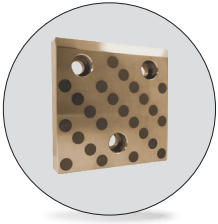
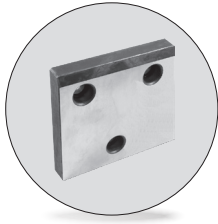


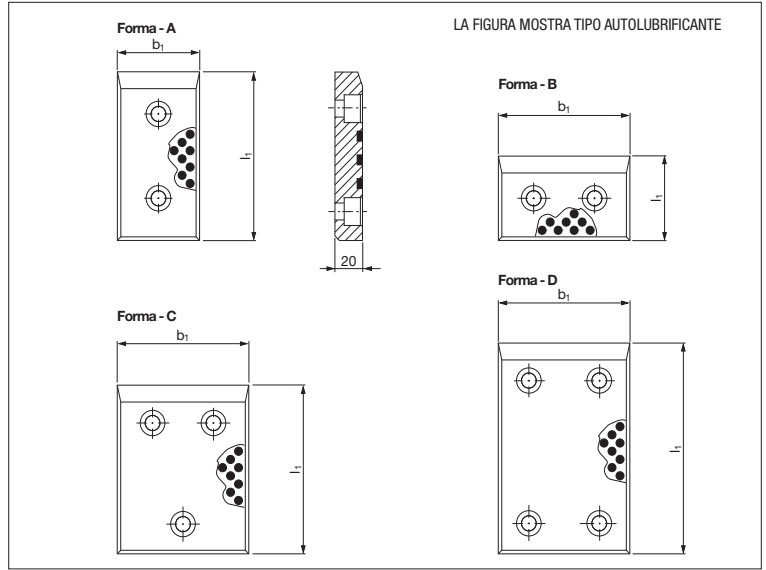
Piastre guida VDI 3357 *Wear plates VDI 3357*



AUTOLUBRIFICANTE
Self-lubricating



IN ACCIAIO
Steel



Codice	Materiale
Cod. 065.90.120	Bronzo + grafite HB \geq 190
	16MnCr5
	HRC 58-62

PIASTRE AUTOLUBRIFICANTI					PIASTRE IN ACCIAIO				
CC number	ex code	Forma	b1	l1	CC number	ex code	Forma	b1	l1
19-290-0069	PBR_05020080	A	50	80	-	PBR_10020315*	A	100	315
19-290-3204	PBR_05020100	A	50	100	19-290-0071	PBR_12520050	B	125	50
19-290-3205	PBR_05020125	A	50	125	19-290-3503	PBR_12520080	B	125	80
19-290-3206	PBR_05020160	A	50	160	19-290-3504	PBR_12520100	C	125	100
19-290-3208	PBR_05020200	A	50	200	19-290-3505	PBR_12520125	C	125	125
19-290-0067	PBR_08020050	B	80	50	19-290-3506	PBR_12520160	C	125	160
19-290-0066	PBR_08020080	A	80	80	19-290-3508	PBR_12520200	C	125	200
19-290-3304	PBR_08020100	A	80	100	-	PBR_12520250*	C	125	250
19-290-3305	PBR_08020125	A	80	125	-	PBR_12520315*	C	125	315
19-290-3306	PBR_08020160	A	80	160	19-290-0075	PBR_16020050	C	160	50
19-290-3308	PBR_08020200	A	80	200	19-290-0073	PBR_16020080	C	160	80
19-290-3402	PBR_10020050	B	100	50	19-290-3604	PBR_16020100	C	160	100
19-290-3403	PBR_10020080	B	100	80	19-290-3605	PBR_16020125	C	160	125
19-290-3404	PBR_10020100	A	100	100	19-290-3606	PBR_16020160	C	160	160
19-290-3405	PBR_10020125	A	100	125	19-290-3608	PBR_16020200	C	160	200
19-290-3406	PBR_10020160	A	100	160		PBR_16020250*	D	160	250
19-290-3408	PBR_10020200	A	100	200		PBR_16020315*	D	160	315
-	PBR_10020250*	A	100	250					

Esempio di ordinazione/Order example = 19-290-0069 (CC number)

*Non a norma VDI

PIASTRE IN ACCIAIO					PIASTRE IN ACCIAIO				
CC number	ex code	Forma	b1	l1	CC number	ex code	Forma	b1	l1
19-290-0070	PAC_05020080	A	50	80	-	PAC_10020315*	A	100	315
19-290-4204	PAC_05020100	A	50	100	19-290-0072	PAC_12520050	B	125	50
19-290-4205	PAC_05020125	A	50	125	19-290-4503	PAC_12520080	B	125	80
19-290-4206	PAC_05020160	A	50	160	19-290-4504	PAC_12520100	C	125	100
19-290-4208	PAC_05020200	A	50	200	19-290-4505	PAC_12520125	C	125	125
19-290-0068	PAC_08020050	B	80	50	19-290-4506	PAC_12520160	C	125	160
19-290-0065	PAC_08020080	A	80	80	19-290-4508	PAC_12520200	C	125	200
19-290-4304	PAC_08020100	A	80	100	-	PAC_12520250*	C	125	250
19-290-4305	PAC_08020125	A	80	125	-	PAC_12520315*	C	125	315
19-290-4306	PAC_08020160	A	80	160	19-290-0076	PAC_16020050	C	160	50
19-290-4308	PAC_08020200	A	80	200	19-290-0074	PAC_16020080	C	160	80
19-290-4402	PAC_10020050	B	100	50	19-290-4604	PAC_16020100	C	160	100
19-290-4403	PAC_10020080	B	100	80	19-290-4605	PAC_16020125	C	160	125
19-290-4404	PAC_10020100	A	100	100	19-290-4606	PAC_16020160	C	160	160
19-290-4405	PAC_10020125	A	100	125	19-290-4608	PAC_16020200	C	160	200
19-290-4406	PAC_10020160	A	100	160	-	PAC_16020250*	D	160	250
19-290-4408	PAC_10020200	A	100	200	-	PAC_16020315*	D	160	315
-	PAC_10020250*	A	100	250					

Esempio di ordinazione/Order example = 19-290-0070 (CC number)

*Non a norma VDI