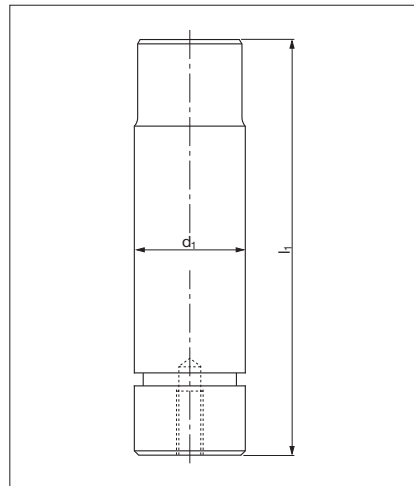


## Perno di arresto *Pad retainer pin*



| Codice                          | Materiale                            |
|---------------------------------|--------------------------------------|
| Cod. <b>B8 2002 621 008 802</b> | CK45<br>800 ÷ 1000 N/mm <sup>2</sup> |

| MB code         | Carico max (Kg) | d1 | l1  |
|-----------------|-----------------|----|-----|
| B8 2002 0333400 | 2000            | 32 | 122 |
| B8 2002 0332932 | 3200            | 40 | 139 |
| B8 2002 0332933 | 5000            | 50 | 167 |



Esempio di ordinazione/Order example = B8 2002 0333400 (MB code)

Rispettare il carico max. *Respect the max load.*