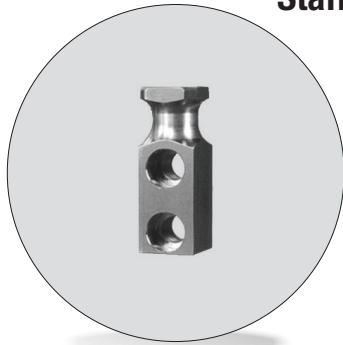
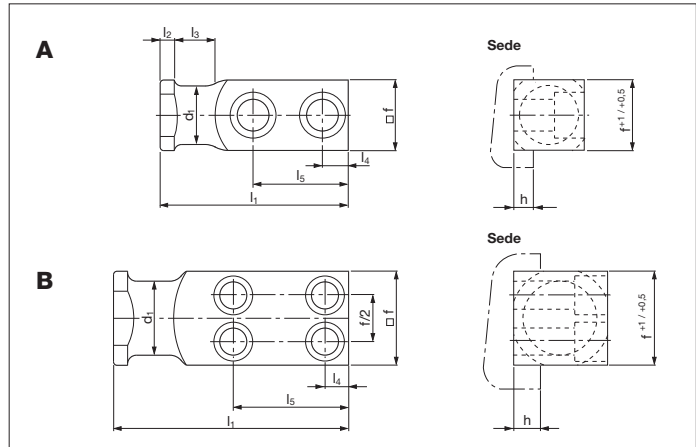


# Staffa di sollevamento VDI 3366 *Lifting brackets VDI 3366*



<b>Codice</b>	<b>Materiale</b>
Cod. <b>395V</b>	1.0503 (C 45) 700 ÷ 800 N/mm <sup>2</sup>



Codice	Carico max kg	Peso max stampo	Form	d1	f	h	l1	l2	l3	l4	l5	DIN 912 * 8,8
395V-04-020-080	320	640	A	16	20	6	80	6	20	10	44	M8x25
395V-04-025-090	630	1260	A	20	25	8	90	8	25	10	47	M10x30
395V-04-035-100	1250	2500	A	25	35	10	100	8	30	12	50	M12x40
395V-04-040-120	2000	4000	A	32	40	10	120	10	32	16	62	M16x45
395V-04-050-140	3200	6400	A	40	50	12	140	10	40	18	72	M20x60
395V-04-060-160	5000	10000	A	50	60	14	160	12	45	22	81	M24x70
395V-04-080-200	8000	16000	B	63	80	16	200	12	50	20	98	M20x90
395V-04-100-250	12500	25000	B	80	100	18	250	15	65	25	125	M24x110
395V-04-120-300	20000	40000	B	100	120	20	300	15	80	30	155	M30x130

\*viti non comprese

Esempio di ordinazione/Order example = 395V-04020080 (codice)

- Rispettare sempre il carico max. *Respect the max load.*
- Per sicurezza, il peso dello stampo, deve essere sempre sopportato da 2 sole staffe. *For safety, consider that the weight of the die has to be supported just by 2 brackets.*