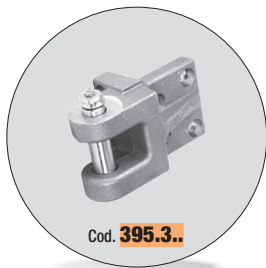


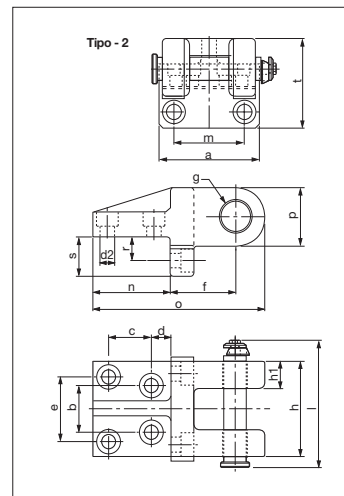
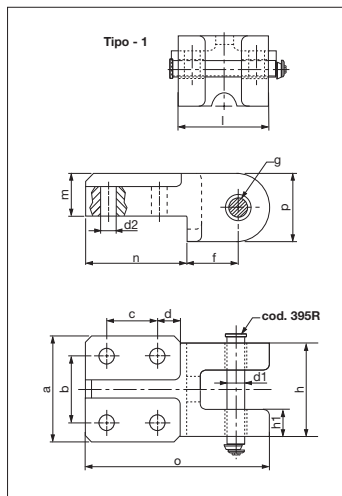
Staffa di sollevamento completa di perno FCA *Lifting bracket with pin FCA*



Cod. **395.3..**

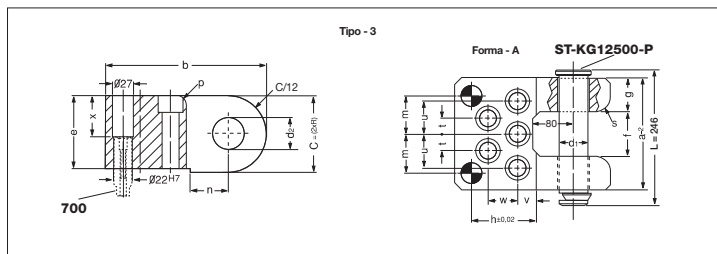


Cod. **395-316**



Codice	Materiale
Cod. 395.3..	CK45 800 ÷ 1000 N/mm ²

NEW	Codice	Materiale
	Cod. 395-316	Staffa = ST52 Perno = CK45 Centraggio = 16MnCr5



Secondo norme FCA 095.90.60 /
095.90.65 / 095.90.70 / 095.90.71

Codice	Carico max kg	Peso max stampo kg	Tipo	a	b	c	d	d1	d2	e	f	g	h	h1	l	m	n	o	p	r	s	t	u	v	w	x	* Viti	
395-311	600	1200	1	80	50	40	22,5	15,6	12,5	-	39	16	70	20	102,5	32	80	145	52	-	-	-	-	-	-	-	-	M12x45
395-312	1000	2000	1	90	60	40	27,5	20,6	16,5	-	42	21	79	22	113,5	36	90	160	56	-	-	-	-	-	-	-	-	M16x55
395-313	2000	4000	1	100	65	65	32,5	25,6	21	-	60	26	90	25	128,5	50	120	215	70	-	-	-	-	-	-	-	-	M20x80
395-314	4000	8000	2	135	56	60	20	33	18	84	85	34	125	35	166,5	96	100	221	72	30	50	111	-	-	-	-	-	M16x45
395-315	7000	14000	2	180	80	70	30	43	22	110	100	44	160	50	210,5	130	125	270	90	35	60	140	-	-	-	-	-	M20x60
395-316	12500	25000	3	200	300	140	-	60	62	130	80	60	145	-	246	77,5	65	-	20	-	30	35	65	60	65	95	M36x160	

Rispettare sempre il carico max. *Respect the max load.*

Esempio di ordinazione/Order example = 395-311 (codice)

Per sicurezza, il peso dello stampo, deve essere sempre sopportato da 2 sole staffe.

For safety, consider that the weight of the die has to be supported just by 2 brackes.

* Viti non incluse. Screws not included.



CF
TORINO