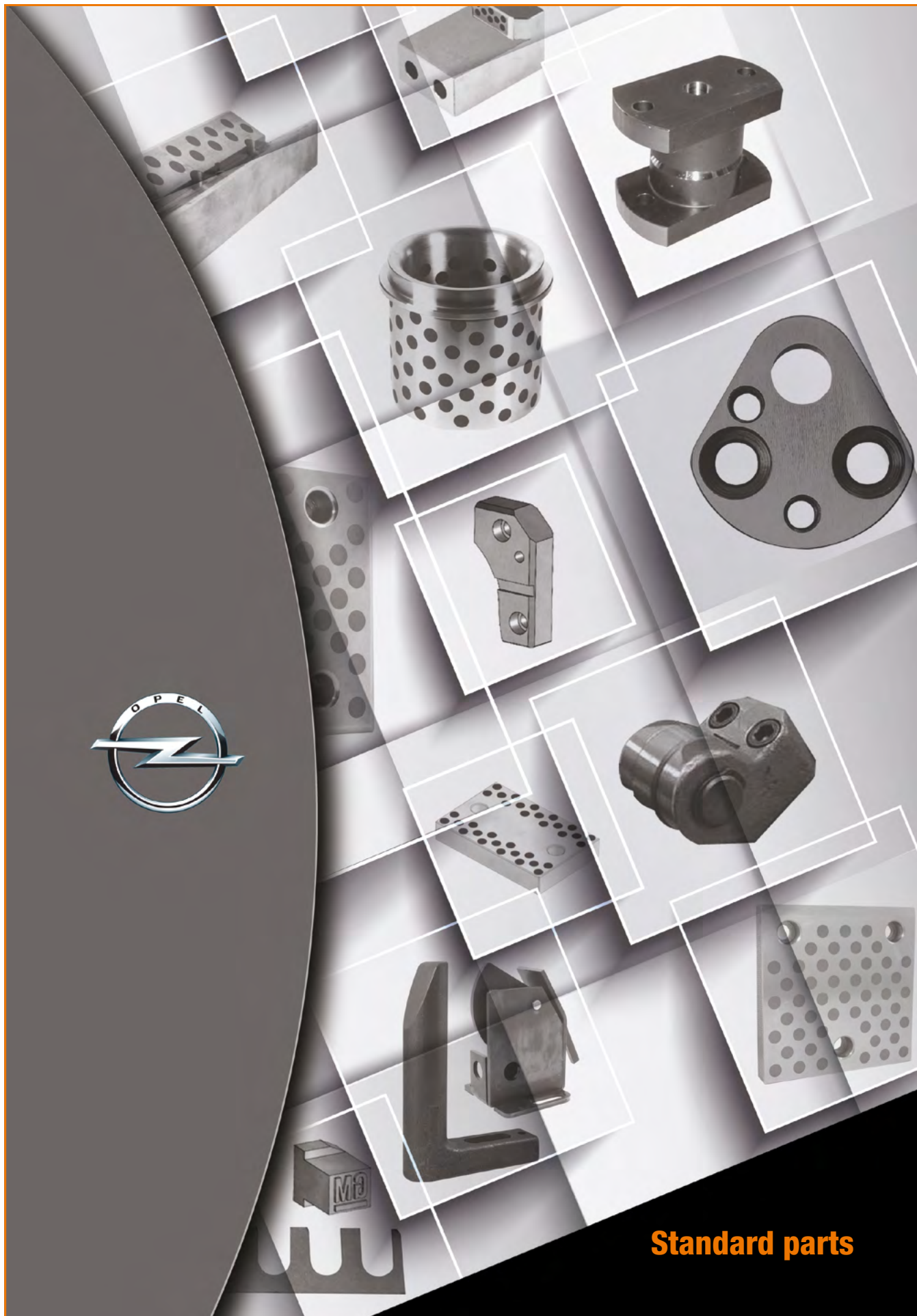


AUTOMOTIVE
Normalizzati per stampi per automotive
Automotive standard parts for die



Standard parts

CF Torino - È vietata la riproduzione, anche parziale, del presente catalogo.



AUTOMOTIVE

Normalizzati per stampi per automotive

Automotive standard parts for die



 F3301	 F3301	 F3301	 F3302	 F3302	 F3303	 F3303
Colonna guida Guide post	Colonna guida Guide post	Colonna guida Guide post	Boccola autolubrificante Guide bushes with collar, self-lubricating	Ritegno Toe clamp	Portamatrice Matrix retainer	Distanziale Distance plate
pag. 7.0P.4	pag. 7.0P.4	pag. 7.0P.4	pag. 7.0P.5	pag. 7.0P.5	pag. 7.0P.5	pag. 7.0P.6
 F3304	 F3304	 F3304	 F3304	 F3304	 F3304	 F3304
Piastra guida VDI 3357 Wear plates, self-lubricating VDI 3357	Piastra guida VDI 3357 Wear plates, steel VDI 3357	Piastra guida autolubrificante Wear plates, self-lubricating	Piastra guida in acciaio, autolubrificante Wear plates, self-lubricating	Piastra guida autolubrificante Wear plates, self-lubricating	Guida a V VDI 3357 "V" Driver , self-lubricating VDI 3357	Reazione ganci "L" shaped wear plates, self-lubricating
pag. 7.0P.6	pag. 7.0P.7	pag. 7.0P.7	pag. 7.0P.8	pag. 7.0P.8	pag. 7.0P.8	pag. 7.0P.9
 F3304	 F3304	 F3304	 F3304	 F3304	 F3304	 F3305
Cuneo in acciaio Cam dwell wear plate, steel	Cuneo autolubrificante Cam dwell wear plate, steel	Piastra guida Wear plates, steel with self-lubricating	Gancio Positive return	Gancio Positive return	Piastra guida Wear plates, self-lubricating VDI 3357	Piastra guida Wear plates, steel
pag. 7.0P.9	pag. 7.0P.9	pag. 7.0P.10	pag. 7.0P.10	pag. 7.0P.10	pag. 7.0P.11	pag. 7.0P.11
 F3305	 F3305	 F3305	 F3305	 F3305	 F3305	 F3315
Guida a V VDI 3357 "V" driver, steel	Guida a V autolubrificante "V" driver, self-lubricating	Guida a V "V" driver, steel	Guida a V autolubrificante "V" driver , self-lubricating	Guida a V "V" driver, steel	Piastra guida Wear plates, steel	Perno di arresto Pad retainer pin
pag. 7.0P.11	pag. 7.0P.11	pag. 7.0P.12	pag. 7.0P.12	pag. 7.0P.12	pag. 7.0P.12-13	pag. 7.0P.13
 F3315	 F3315	 F3315	 F3315	 F3316	 F3316	 F3316
Candela Aerial pin	Candela Air pin	Centraggio Locating pin	Perno di sollevamento Lifting pins	Rondella Washer	Distanziale Distance plate	Piastra di spessore Shim plate
pag. 7.0P.13	pag. 7.0P.13	pag. 7.0P.14	pag. 7.0P.14	pag. 7.0P.14	pag. 7.0P.14	pag. 7.0P.15
 F3316	 F3316	 F3316	 F3316	 F3318	 F3318	 F3319
Piastra di ritegno Retaining plate	Spessore per portapunzione Shim punch retainer	Piastra di reazione Backing plate	Piastra di reazione Backing plate	Rondella Washer	Distanziale Distance plate	Cono di centraggio Locating cone
pag. 7.0P.15	pag. 7.0P.15	pag. 7.0P.16	pag. 7.0P.16	pag. 7.0P.16	pag. 7.0P.17	pag. 7.0P.17
 F3319	 F3319	 F3319	 F3320	 F3326	 F3326	 F3326
Distanziale Spacer	Distanziale Bottoming blocks	Distanziale Spacer	Chiavetta Key	Riferimento Gage	Camma di accelerazione Acceleration cam	Guida Guide
pag. 7.0P.17	pag. 7.0P.17	pag. 7.0P.18	pag. 7.0P.18	pag. 7.0P.18	pag. 7.0P.18	pag. 7.0P.19
 F3326	 F3326	 F3326	 F3326	 F3326	 F3328	 F3329
Disco Disk	Rondella Washer	Supporto con rullo Cam roller	Portasensore Front gage	Arresto slitta Slide stop block	Avvolgitore per cavi elettrici Coiler for electrical wires	Colonna portatimbr Stamp rack pillar
pag. 7.0P.19	pag. 7.0P.19	pag. 7.0P.19	pag. 7.0P.20	pag. 7.0P.20	pag. 7.0P.20	pag. 7.0P.20



AUTOMOTIVE

CF Torino - È vietata la riproduzione, anche parziale, del presente catalogo.



AUTOMOTIVE

Normalizzati per stampi per automotive

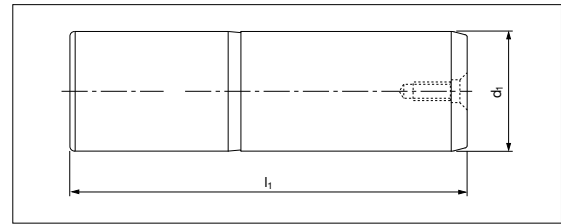
Automotive standard parts for die



Colonna guida Guide post



Codice	Materiale
Cod. F3301	16MnCr5 HRC 60 ÷ 62



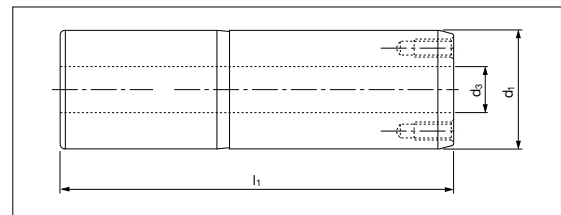
OPEL code	d1	l1	OPEL code	d1	l1	OPEL code	d1	l1	OPEL code	d1	l1
F33010001	25	125	F33010012	40	200	F33010022	50	315	F33010032	80	224
F33010002	25	140	F33010013	40	224	F33010023	50	355	F33010033	80	250
F33010003	25	160	F33010014	40	250	F33010024	63	180	F33010034	80	280
F33010004	25	180	F33010015	40	280	F33010025	63	200	F33010035	80	315
F33010005	32	140	F33010016	50	160	F33010026	63	224	F33010036	80	355
F33010006	32	160	F33010017	50	180	F33010027	63	250	F33010037	80	400
F33010007	32	180	F33010018	50	200	F33010028	63	280	F33010046	63	450
F33010008	32	200	F33010019	50	224	F33010029	63	315	F33010047	63	500
F33010009	40	140	F33010020	50	250	F33010030	63	355	F33010048	80	450
F33010010	40	160	F33010021	50	280	F33010031	63	400	F33010049	80	500
F33010011	40	180									

Esempio di ordinazione/Order example = F33010001 (OPEL code)

Colonna guida Guide post



Codice	Materiale
Cod. F3301	16MnCr5 HRC 60 ÷ 62



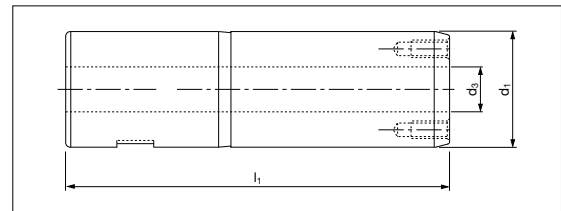
OPEL code	d1	d3	l1	OPEL code	d1	d3	l1	OPEL code	d1	d3	l1
F33010038	100	50	280	F33010044	125	65	400	F33010054	100	50	650
F33010039	100	50	315	F33010045	125	65	450	F33010055	125	65	500
F33010040	100	50	355	F33010050	100	50	450	F33010056	125	65	550
F33010041	100	50	400	F33010051	100	50	500	F33010057	125	65	600
F33010042	125	65	315	F33010052	100	50	550	F33010058	125	65	650
F33010043	125	65	355	F33010053	100	50	600				

Esempio di ordinazione/Order example = F33010038 (OPEL code)

Colonna guida Guide post



Codice	Materiale
Cod. F3301	16MnCr5 HRC 60 ÷ 62



OPEL code	d1	d3	l1	OPEL code	d1	d3	l1	OPEL code	d1	d3	l1
F33010060	100	50	280	F33010066	100	50	550	F33010072	125	65	450
F33010061	100	50	315	F33010067	100	50	600	F33010073	125	65	500
F33010062	100	50	355	F33010068	100	50	650	F33010074	125	65	550
F33010063	100	50	400	F33010069	125	65	315	F33010075	125	65	600
F33010064	100	50	450	F33010070	125	65	355	F33010076	125	65	650
F33010065	100	50	500	F33010071	125	65	400				

Esempio di ordinazione/Order example = F33010060 (OPEL code)



INDEX



AUTOMOTIVE



AUTOMOTIVE

Normalizzati per stampi per automotive

Automotive standard parts for die

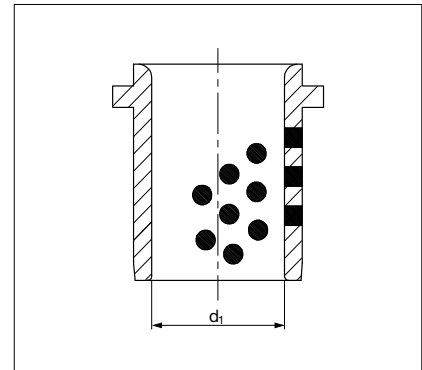


Boccola autolubrificante *Guide bushes with collar, self-lubricating*



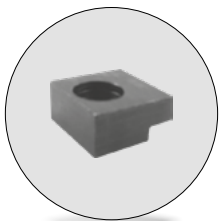
Codice	Materiale
Cod. F3302	Bronzo + grafite HB ≥ 190

OPEL code	d1	OPEL code	d1
F33020019	25	F33020023	63
F33020020	32	F33020024	80
F33020021	40	F33020025	100
F33020022	50	F33020026	125



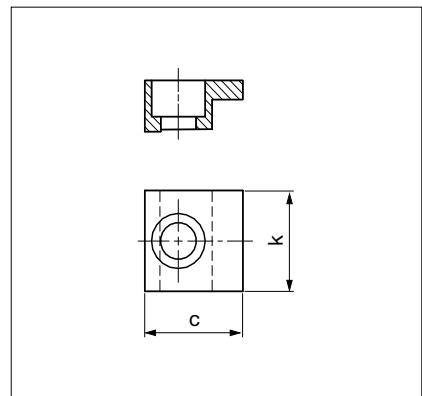
Esempio di ordinazione/Order example = F33020019 (OPEL code)

Ritegno *Toe clamp*



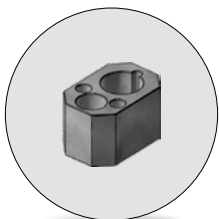
Codice	Materiale
Cod. F3302	CK45

OPEL code	c	k	Ø boccola
F33020036	25	20	25 ÷ 50
F33020037	32	25	63 ÷ 125



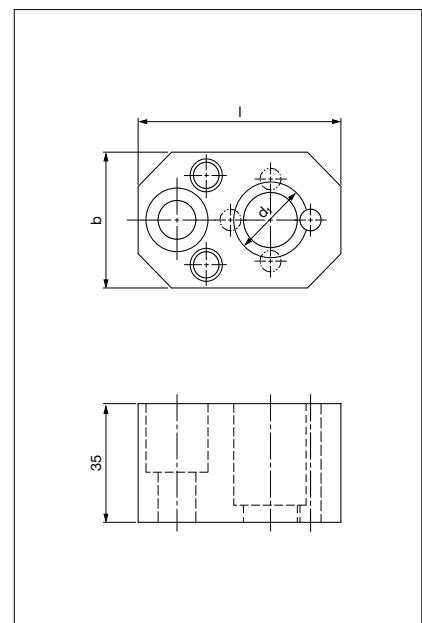
Esempio di ordinazione/Order example = F33020036 (OPEL code)

Portamatrice *Matrix retainer*



Codice	Materiale
Cod. F3303	CK45

OPEL code				b	d1	l
0°	90°	180°	270°			
F33030001	F33030011	F33030021	F33030031	40	10	60
F33030002	F33030012	F33030022	F33030032	40	13	60
F33030003	F33030013	F33030023	F33030033	40	16	60
F33030004	F33030014	F33030024	F33030034	40	20	60
F33030006	F33030016	F33030026	F33030036	40	25	60
F33030007	F33030017	-	F33030037	40	32	60
F33030008	F33030018	F33030028	F33030038	60	38	80
F33030009	F33030019	F33030029	F33030039	60	45	80
F33030010	F33030020	-	F33030040	60	50	80



Esempio di ordinazione/Order example = F33030001 (OPEL code)

INDEX

CF Torino - È vietata la riproduzione, anche parziale, del presente catalogo.

AUTOMOTIVE



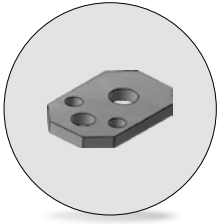
AUTOMOTIVE

Normalizzati per stampi per automotive

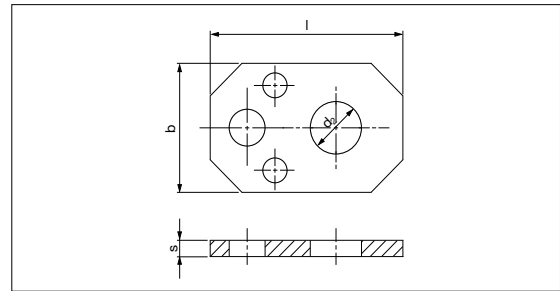
Automotive standard parts for die



Distanziale *Distance plate*



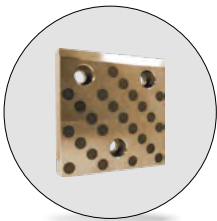
Codice	Materiale
Cod. F3303	CK45



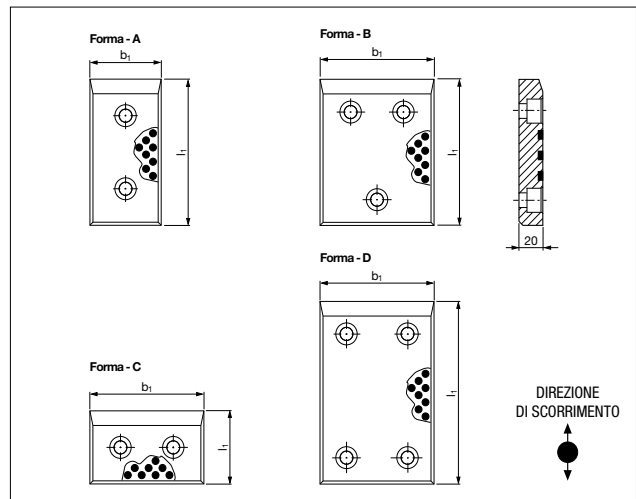
OPEL code	b	d2	l	s	OPEL code	b	d2	l	s
F33030041	40	6,5	60	2	F33030058	40	19	60	6
F33030042	40	6,5	60	4	F33030059	40	22,5	60	2
F33030043	40	6,5	60	6	F33030060	40	22,5	60	4
F33030044	40	9,5	60	2	F33030061	40	22,5	60	6
F33030045	40	9,5	60	4	F33030062	60	28,5	80	2
F33030046	40	9,5	60	6	F33030063	60	28,5	80	4
F33030047	40	11	60	2	F33030064	60	28,5	80	6
F33030048	40	11	60	4	F33030065	60	37,5	80	2
F33030049	40	11	60	6	F33030066	60	37,5	80	4
F33030050	40	13,5	60	2	F33030067	60	37,5	80	6
F33030051	40	13,5	60	4	F33030068	60	42,5	80	2
F33030052	40	13,5	60	6	F33030069	60	42,5	80	4
F33030056	40	19	60	2	F33030070	60	42,5	80	6
F33030057	40	19	60	4					

Esempio di ordinazione/Order example = F33030041 (OPEL code)

Piastra guida VDI 3357 *Wear plates, self-lubricating VDI 3357*



Codice	Materiale
Cod. F3304	Bronzo e grafite HB ≥ 190



OPEL code	Forma	b1	l1
F33040000	A	50	100
F33040001	A	50	125
F33040002	A	50	160
F33040003	A	50	200
F33040004	A	80	100
F33040005	A	80	125
F33040006	A	80	160
F33040007	A	80	200
F33040008	C	100	50
F33040009	C	100	80
F33040010	A	100	100
F33040011	A	100	125
F33040012	A	100	160
F33040013	A	100	200
F33040014	C	125	80
F33040015	B	125	100
F33040016	B	125	125
F33040017	B	125	160
F33040018	B	160	100
F33040019	B	160	125
F33040020	B	160	160

Esempio di ordinazione/Order example = F33040000 (OPEL code)

Codice	Forma	b1	l1
F33040113*	D	100	250
F33040114*	D	125	200
F33040115*	D	160	200
F33040116*	D	160	250
F33040117*	D	160	300
F33040118*	D	200	200
F33040119*	D	200	250
F33040120*	D	200	300
F33040138*	D	125	250

*Non conforme a VDI 3357. Not in accordance with VDI3357.



INDEX



AUTOMOTIVE



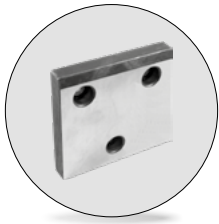
AUTOMOTIVE

Normalizzati per stampi per automotive

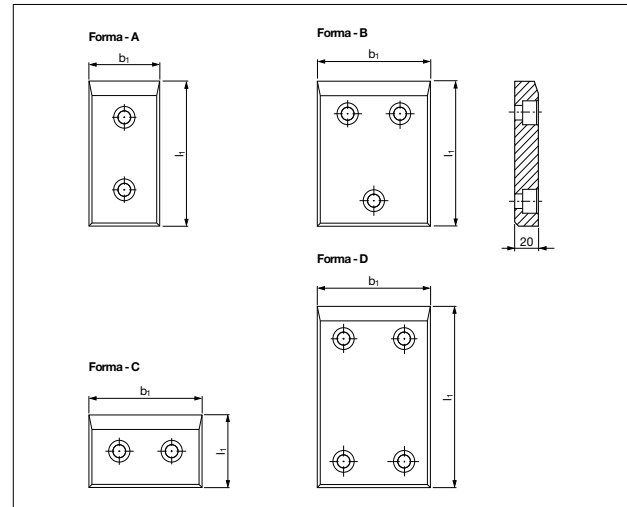
Automotive standard parts for die



Piastra guida VDI 3357 *Wear plates, steel VDI 3357*



Codice	Materiale
Cod. F3304	16MnCr5 HRC 58 ÷ 60



OPEL code	Forma	b1	l1
F33040121	C	100	50
F33040122	C	100	80
F33040123*	D	100	250
F33040124	C	125	80
F33040125	B	125	100
F33040126	B	125	125
F33040127*	D	125	200
F33040128*	D	125	250
F33040129	B	160	100
F33040130	B	160	125
F33040131	B	160	160
F33040132*	D	160	200
F33040133*	D	160	250
F33040134*	D	160	300
F33040135*	D	200	200
F33040136*	D	200	250
F33040137*	D	200	300
F33050000	A	50	100
F33050001	A	50	125
F33050002	A	50	160
F33050003	A	50	200

Codice	Forma	b1	l1
F33050004	A	80	100
F33050005	A	80	125
F33050006	A	80	160
F33050007	A	80	200
F33050008	A	100	100
F33050009	A	100	125
F33050010	A	100	160
F33050011	A	100	200
F33050012	B	125	160

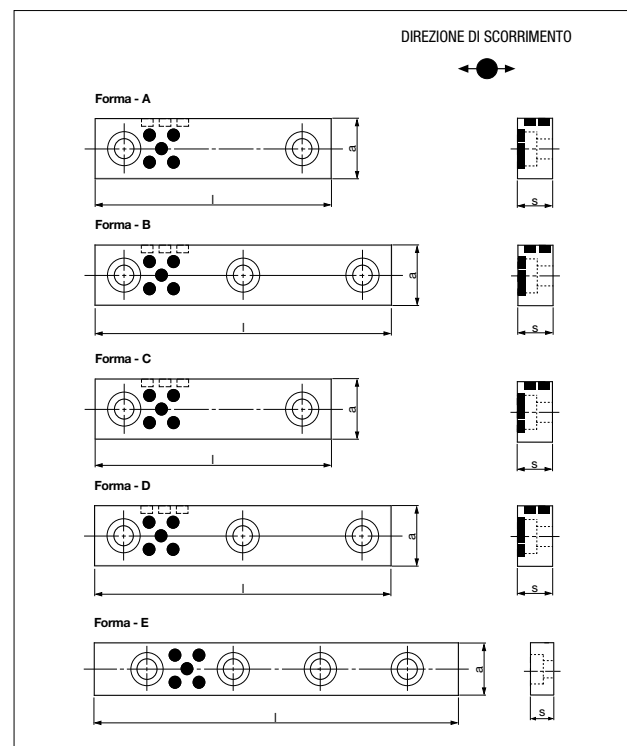
Esempio di ordinazione/Order example = F33040121 (OPEL code)

*Non conforme a VDI 3357. Not in accordance with VDI3357.

Piastra guida autoubrificante *Wear plates, self-lubricating*



Codice	Materiale
Cod. F3304	Bronzo e grafite HB ≥ 190



OPEL code	Forma	a	l	s
F33040024	E	35	100	10
F33040025	E	35	150	10
F33040026	E	35	200	10
F33040027	E	35	250	10
F33040028	E	35	300	10
F33040029	E	35	350	10
F33040030	A	50	150	25
F33040031	A	50	200	25
F33040032	B	50	250	25
F33040033	C	75	150	25
F33040034	D	75	200	25
F33040035	D	75	250	25

Esempio di ordinazione/Order example = F33040024 (OPEL code)

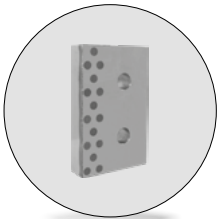
INDEX

CF Torino - È vietata la riproduzione, anche parziale, del presente catalogo.

AUTOMOTIVE

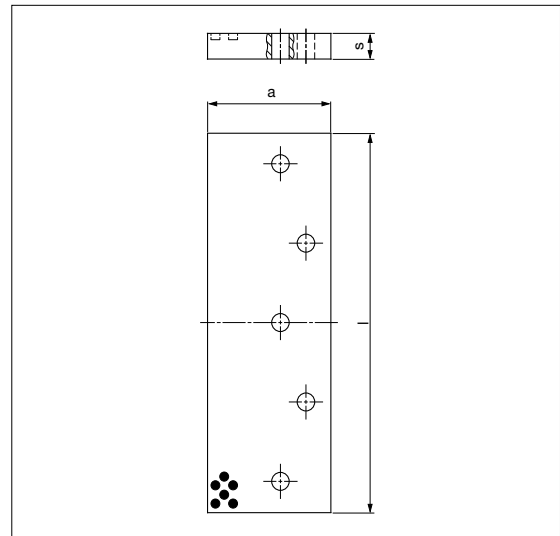


Piastra guida in acciaio autolubrificante *Wear plates, steel self-lubricating*



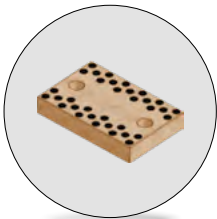
Codice	Materiale
Cod. F3304	CK45 + grafite HRC 60 ÷ 62

OPEL code	a	l	s
F33040036	100	160	20
F33040037	100	200	20
F33040038	100	250	20
F33040039	100	300	20
F33040040	125	160	30
F33040041	125	250	30
F33040042	125	300	30
F33040043	125	350	30
F33040044	125	400	30



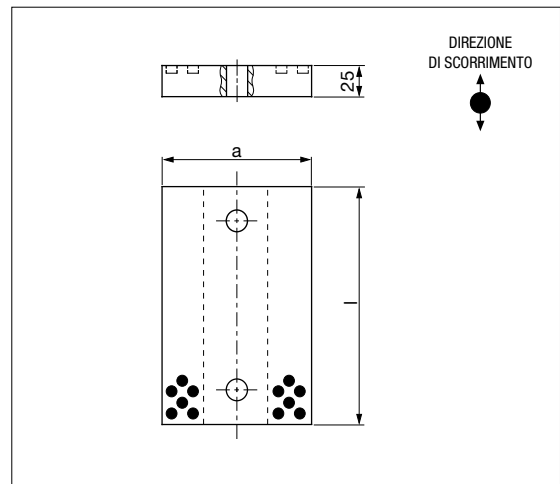
Esempio di ordinazione/Order example = F33040036 (OPEL code)

Piastra guida autolubrificante *Wear plates, self-lubricating*



Codice	Materiale
Cod. F3304	Bronzo + grafite HB ≥ 190

OPEL code	a	l
F33040085	100	100
F33040086	100	150
F33040112	120	150



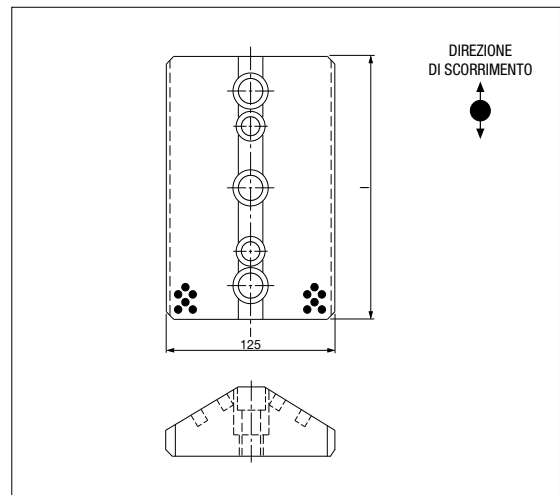
Esempio di ordinazione/Order example = F33040085 (codice)

Guida a V autolubrificante VDI 3357 *"V" driver, self-lubricating VDI 3357*



Codice	Materiale
Cod. F3304	Bronzo + grafite HB ≥ 190

OPEL code	l
F33040090	150
F33040091	200
F33040092	250
F33040093	300



Esempio di ordinazione/Order example = F33040090 (OPEL code)



INDEX



AUTOMOTIVE



AUTOMOTIVE

Normalizzati per stampi per automotive

Automotive standard parts for die

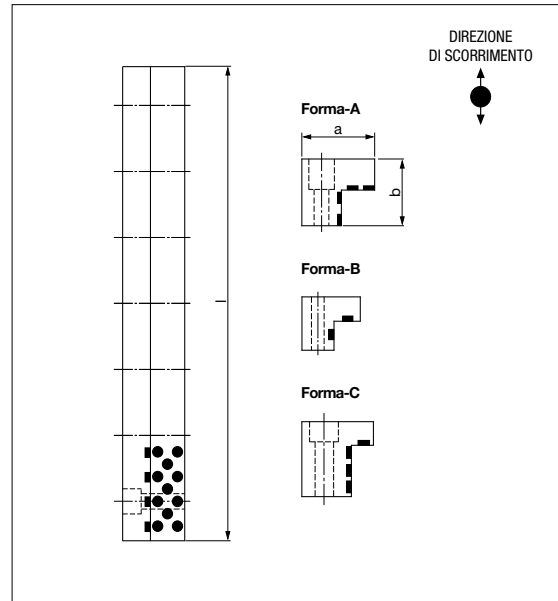


Guida angolare autolubrificante "L" shaped wear plates, self-lubricating



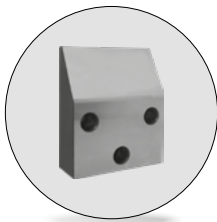
Codice	Materiale
Cod. F3304	Bronzo + grafite HB ≥ 190

OPEL code	Forma	a	b	l
F33040100	A	50	45	200
F33040101	A	50	45	250
F33040102	A	50	45	300
F33040103	A	50	45	350
F33040104	A	50	45	400
F33040105	A	50	45	500
F33040106	B	32	30	150
F33040107	B	32	30	250
F33040108	B	32	30	300
F33040109	C	50	50	200
F33040110	C	50	50	250
F33040111	C	50	50	300



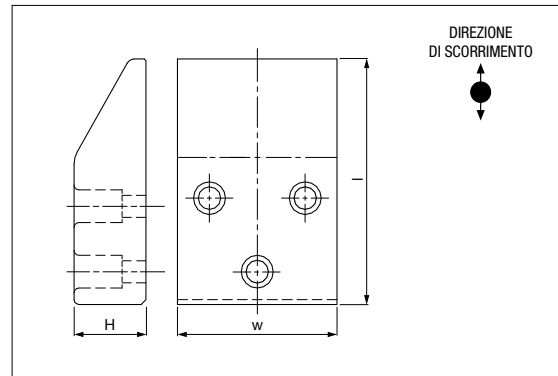
Esempio di ordinazione/Order example = F33040100 (OPEL code)

Cuneo in acciaio Cam dwell , steel



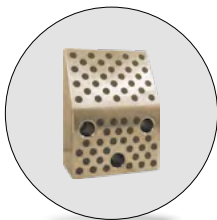
Codice	Materiale
Cod. F3304	42CrMo4 HRC 58 ÷ 60

OPEL code	w	l	H	OPEL code	w	l	H
F33040139	100	125	30	F33040144	160	150	45
F33040140	125	125	30	F33040145	100	170	60
F33040141	160	125	30	F33040146	125	170	60
F33040142	100	150	45	F33040147	160	170	60
F33040143	125	150	45				



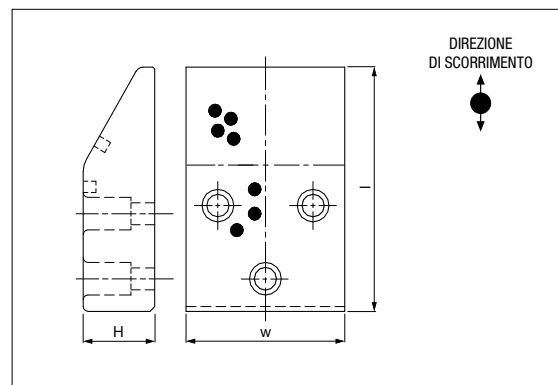
Esempio di ordinazione/Order example = F33040139 (OPEL code)

Cuneo autolubrificante Cam dwell self-lubricating



Codice	Materiale
Cod. F3304	Bronzo + grafite HB ≥ 190

OPEL code	w	l	H	OPEL code	w	l	H
F33040148	100	125	30	F33040153	160	150	45
F33040149	125	125	30	F33040154	100	170	60
F33040150	160	125	30	F33040155	125	170	60
F33040151	100	150	45	F33040156	160	170	60
F33040152	125	150	45				



Esempio di ordinazione/Order example = F33040148 (OPEL code)

INDEX

AUTOMOTIVE



AUTOMOTIVE

Normalizzati per stampi per automotive

Automotive standard parts for die

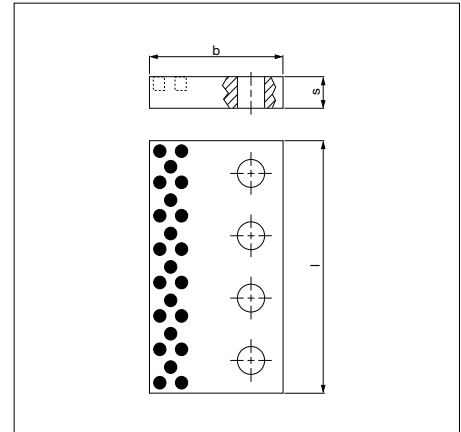


Piastra guida *Wear plates, steel with self-lubricating*

Codice	Materiale
Cod. F3304	CK45 + grafite HRC 58 ÷ 60

OPEL code	b	l	s	Fori	OPEL code	b	l	s	Fori
F33040165	52	150	20	3	F33040171	77	150	35	3
F33040166	52	200	20	3	F33040172	77	200	35	3
F33040167	52	250	20	4	F33040173	77	250	35	4
F33040168	72	150	30	3	F33040174	82	150	40	3
F33040169	72	200	30	3	F33040175	82	200	40	3
F33040170	72	250	30	4	F33040176	82	250	40	4

Esempio di ordinazione/Order example = F33040165 (OPEL code)

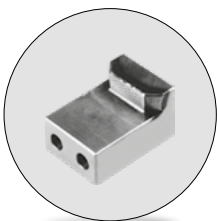
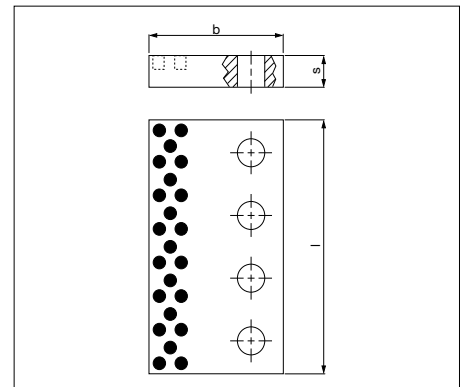


Piastra guida *Wear plates, steel with self-lubricating*

Codice	Materiale
Cod. F3304	CK45 + grafite HRC 58 ÷ 60

OPEL code	b	l	s	Fori	OPEL code	b	l	s	Fori
F33040177	70	160	25	2	F33040181	85	240	28	3
F33040178	70	200	25	3	F33040182	85	300	28	4
F33040179	70	240	25	3	F33040183	85	350	28	4
F33040180	85	200	28	3					

Esempio di ordinazione/Order example = F33040177 (OPEL code)

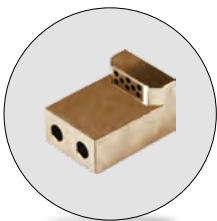
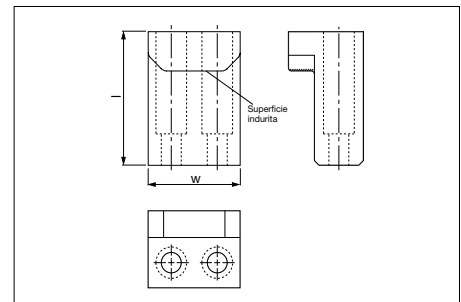


Gancio *Positive return*

Codice	Materiale
Cod. F3304	CK45 HRC 58 ÷ 60

OPEL code	w	l	OPEL code	w	l
F33040287	60	85	F33040289	80	85

Esempio di ordinazione/Order example = F33040287 (OPEL code)

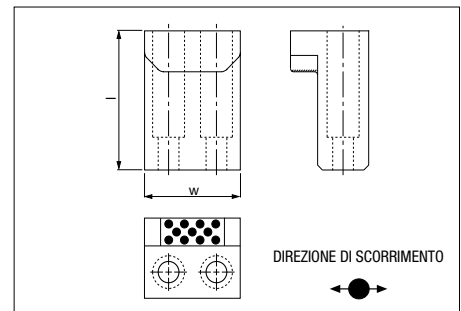


Gancio *Positive return*

Codice	Materiale
Cod. F3304	Bronzo + grafite HB ≥ 190

OPEL code	w	l	OPEL code	w	l
F33040288	60	85	F33040290	80	85

Esempio di ordinazione/Order example = F33040288 (OPEL code)



INDEX



AUTOMOTIVE

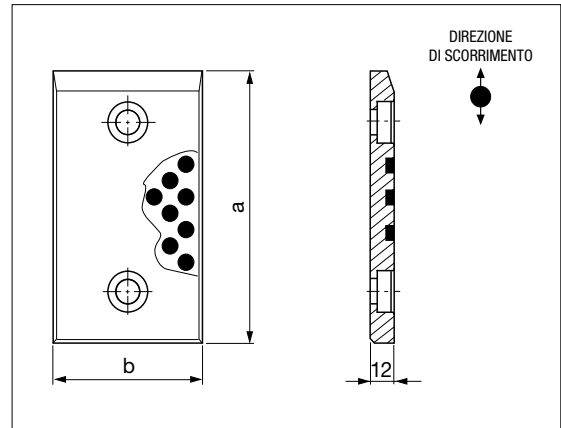


Piastra guida *Wear plates, self-lubricating VDI 3357*



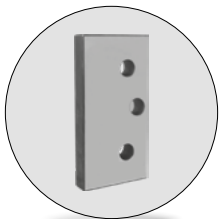
Codice	Materiale
Cod. F3304	Bronzo + grafite HB ≥ 190

OPEL code	b	a	OPEL code	b	a
F33040305	30	80	F33040313	60	80
F33040306	30	100	F33040314	60	100
F33040307	30	125	F33040315	60	125
F33040308	30	200	F33040316	60	200
F33040309	40	80	F33040317	80	80
F33040310	40	100	F33040318	80	100
F33040311	40	125	F33040319	80	125
F33040312	40	200	F33040320	80	200



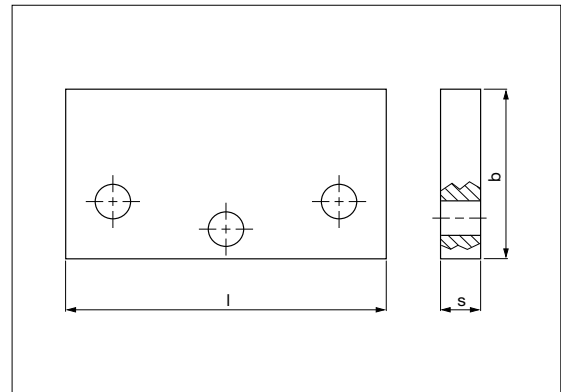
Esempio di ordinazione/Order example = F33040305 (OPEL code)

Piastra guida *Wear plates, steel*



Codice	Materiale
Cod. F3305	16MnCr5 HRC 58 ÷ 60

OPEL code	b	l	s	OPEL code	b	l	s
F33050018	100	160	20	F33050023	125	250	30
F33050019	100	200	20	F33050024	125	300	30
F33050020	100	250	20	F33050025	125	350	30
F33050021	100	300	20	F33050026	125	400	30
F33050022	125	160	30				



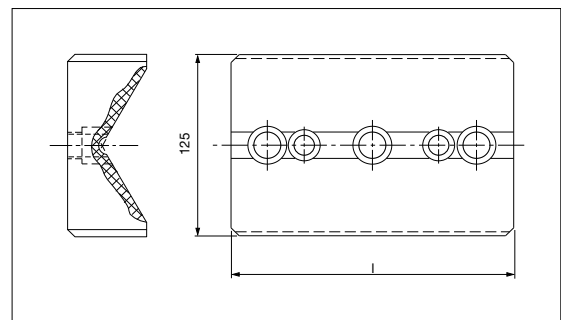
Esempio di ordinazione/Order example = F33050018 (OPEL code)

Guida a V in acciaio VDI 3357 *"V" Driver, steel VDI 3357*



Codice	Materiale
Cod. F3305	CK45 HRC 58 ÷ 60

OPEL code	l	OPEL code	l
F33050069	150	F33050071	250
F33050070	200	F33050072	300



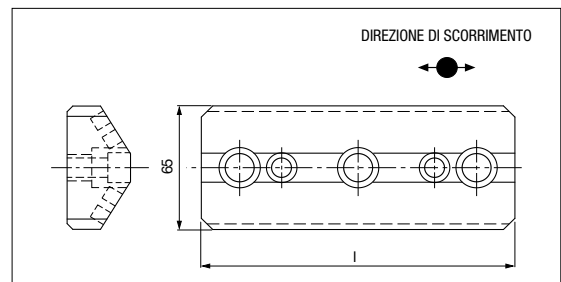
Esempio di ordinazione/Order example = F33050069 (OPEL code)

Guida a V autolubrificante *"V" Driver, self-lubricating*



Codice	Materiale
Cod. F3305	Bronzo + grafite HB ≥ 190

OPEL code	l
F33050081	150
F33050082	200
F33050083	250



Esempio di ordinazione/Order example = F33050081 (OPEL code)



INDEX



AUTOMOTIVE



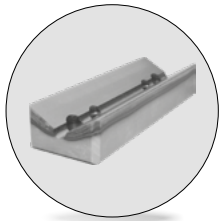
AUTOMOTIVE

Normalizzati per stampi per automotive

Automotive standard parts for die

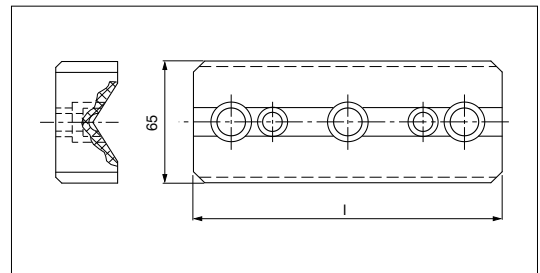


Guida a V "V" Driver, steel



Codice	Materiale
Cod. F3305	CK45 HRC 58 ÷ 60

OPEL code	l
F33050084	150
F33050085	200
F33050086	250



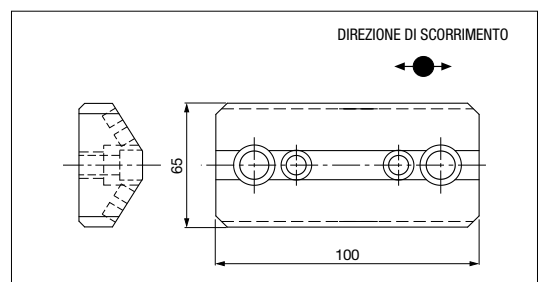
Esempio di ordinazione/Order example = F33050084 (OPEL code)

Guida a V autolubrificante "V" driver, self-lubricating



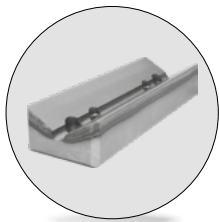
Codice	Materiale
Cod. F3305	Bronzo + grafite HB ≥ 190

OPEL code
F33050088



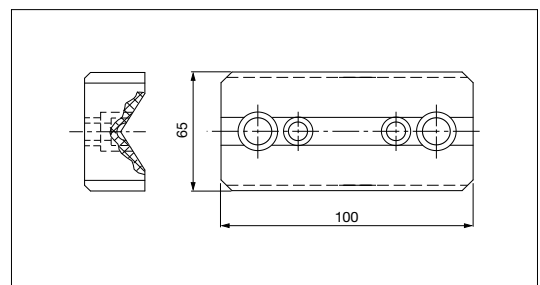
Esempio di ordinazione/Order example = F33050088 (codice)

Guida a V in acciaio "V" driver, steel



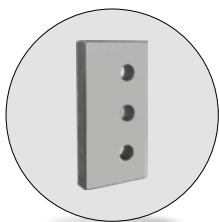
Codice	Materiale
Cod. F3305	CK45 HRC 58 ÷ 60

OPEL code
F33050087



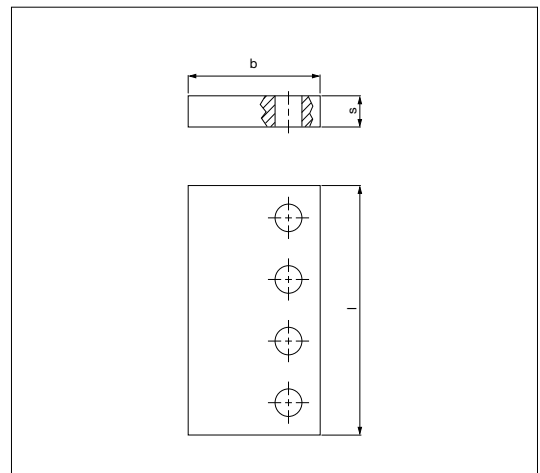
Esempio di ordinazione/Order example = F33050087 (OPEL code)

Piastra guida Wear Plates, steel



Codice	Materiale
Cod. F3305	CK45 HRC 58 ÷ 60

OPEL code	b	l	s	Fori	OPEL code	b	l	s	Fori
F33050089	52	150	20	3	F33050095	77	150	35	3
F33050090	52	200	20	3	F33050096	77	200	35	3
F33050091	52	250	20	4	F33050097	77	250	35	4
F33050092	72	150	30	3	F33050098	82	150	40	3
F33050093	72	200	30	3	F33050099	82	200	40	3
F33050094	72	250	30	4	F33050100	82	250	40	4



Esempio di ordinazione/Order example = F33050089 (OPEL code)



INDEX



AUTOMOTIVE



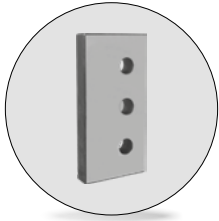
AUTOMOTIVE

Normalizzati per stampi per automotive

Automotive standard parts for die



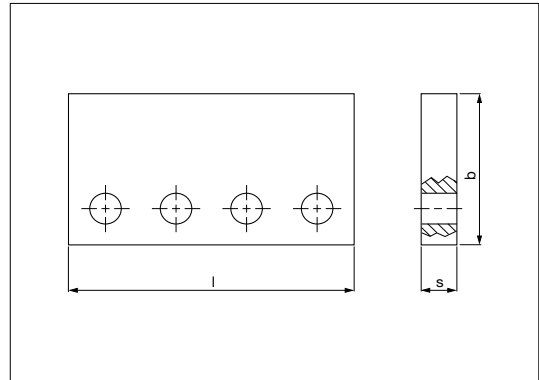
Piastra guida *Wear plates steel*



Codice	Materiale
Cod. F3305	CK45 HRC 58 ÷ 60

OPEL code	b	l	s	Fori	OPEL code	b	l	s	Fori
F33050101	70	160	25	2	F33050105	85	240	28	3
F33050102	70	200	25	3	F33050106	85	300	28	4
F33050103	70	240	25	3	F33050107	85	350	28	4
F33050104	85	200	28	3					

Esempio di ordinazione/Order example = F33050101 (OPEL code)



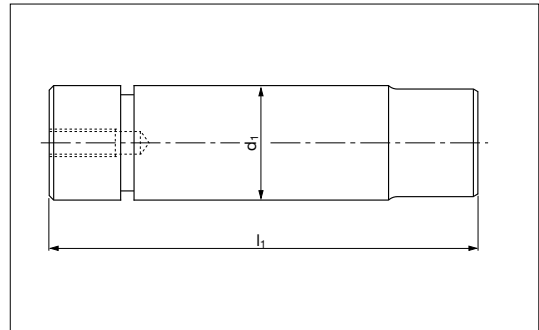
Perno di arresto *Pad retainer pin*



Codice	Materiale
Cod. F3315	42CrMo4 900 ÷ 1000 N/mm ²

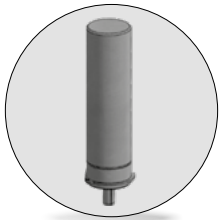
OPEL code	Carico max (N)	d1	l1	OPEL code	Carico max (N)	d1	l1
F33150011	60300	32	130	F33150014	189900	56	190
F33150012	94700	40	155	F33150015	241400	63	210
F33150013	150800	50	185				

Esempio di ordinazione/Order example = F33150011 (OPEL code)



Rispettare il carico max. *Respect the max load.*

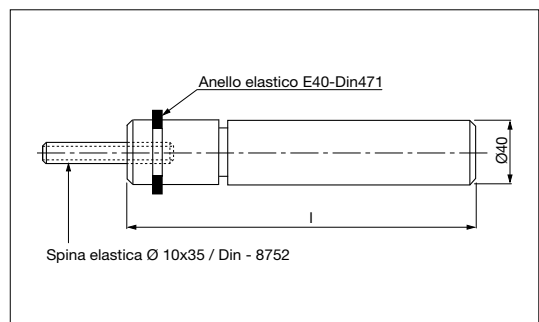
Candela *Aerial pin*



Codice	Materiale
Cod. F3315	CK45

OPEL code	l	OPEL code	l
F33150037	125	F33150041	225
F33150038	150	F33150042	250
F33150039	175	F33150043	275
F33150040	200	F33150044	300

Esempio di ordinazione/Order example = F33150037 (OPEL code)



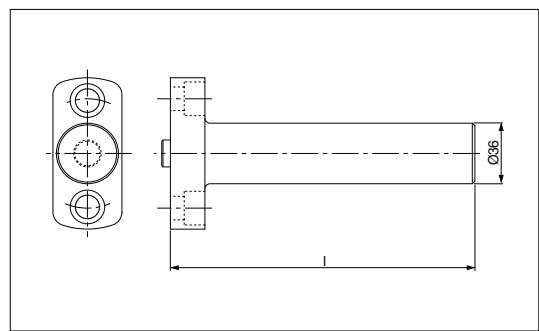
Candela *Air pin*



Codice	Materiale
Cod. F3315	CK45 800 ÷ 1000 N/mm ²

OPEL code	l	OPEL code	l
F33150045	150	F33150047	200
F33150046	175	F33150048	225

Esempio di ordinazione/Order example = F33150045 (OPEL code)



INDEX



AUTOMOTIVE



AUTOMOTIVE

Normalizzati per stampi per automotive

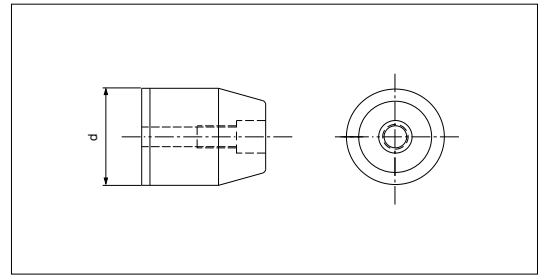
Automotive standard parts for die



Centraggio *Locating pin*

Codice	Materiale
Cod. F3315	16MnCr5 HRC 56 ÷ 60

OPEL code	d
F33150060	40
F33150061	50



Esempio di ordinazione/Order example = F33150060 (OPEL code)



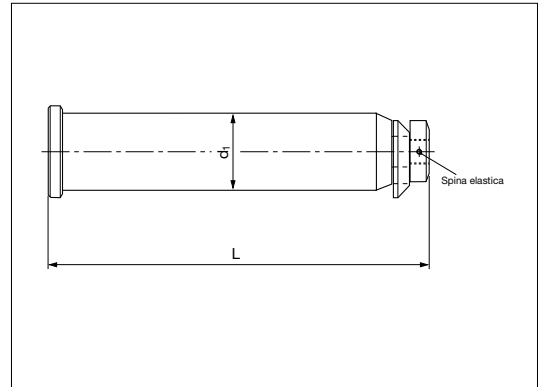
Perno di sollevamento *Lifting pin*



Codice	Materiale
Cod. F3315	42CrMo4

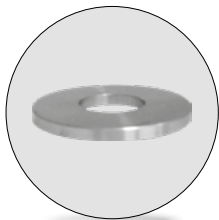
Per sicurezza, il peso dello stampo, deve essere sempre sopportato da 2 soli perni.
For safety, consider that the weight of the die has to be supported just by 2 lifting pins.

OPEL code	Carico max (Kg)	Peso max stampo	d1	L
F33150087	3400	6800	32	177
F33150088	5650	11300	40	220
F33150089	8950	17900	50	270
F33150090	14350	28700	63	342
F33150091	26700	53400	80	387



Esempio di ordinazione/Order example = F33150087 (OPEL code)

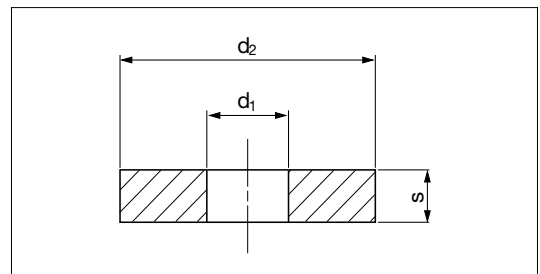
Rispettare il carico max. Respect the max load.



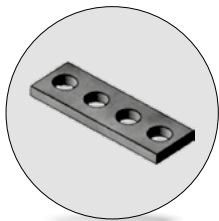
Rondella *Washer*

Codice	Materiale
Cod. F3316	CK45

OPEL code	d1	d2	s
F33160106	21	70	10
F33160107	25	80	15

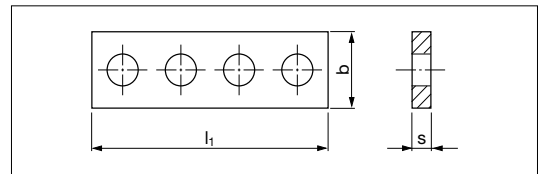


Esempio di ordinazione/Order example = F33160106 (OPEL code)



Distanziale *Distance plate*

Codice	Materiale
Cod. F3316	CK45



OPEL code	b	l	s	OPEL code	b	l	s	OPEL code	b	l	s	OPEL code	b	l	s
F33160108	20	60	4,4	F33160115	16	65	4,4	F33160122	12,5	42	4,4	F33160199	12,5	42	5,8
F33160109	20	60	4,6	F33160116	16	65	4,6	F33160123	12,5	42	4,6	F33160200	12,5	42	7,8
F33160110	20	60	4,8	F33160117	16	65	4,8	F33160124	12,5	42	4,8	F33160201	16	65	5,8
F33160111	20	60	5	F33160118	16	65	5	F33160125	12,5	42	5	F33160202	16	65	7,5
F33160112	20	60	5,2	F33160119	16	65	5,2	F33160126	12,5	42	5,2	F33160203	20	60	5,8
F33160113	20	60	5,4	F33160120	16	65	5,4	F33160127	12,5	42	5,4	F33160204	20	60	7,8
F33160114	20	60	5,6	F33160121	16	65	5,6	F33160128	12,5	42	5,6				

Esempio di ordinazione/Order example = F33160108 (OPEL code)



INDEX



AUTOMOTIVE



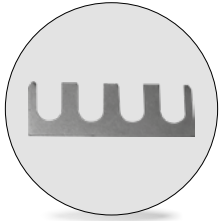
AUTOMOTIVE

Normalizzati per stampi per automotive

Automotive standard parts for die



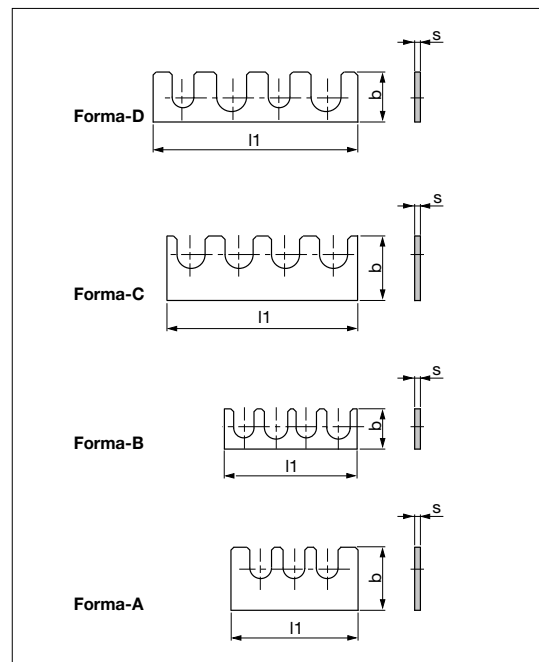
Piastra di spessore Shim plate



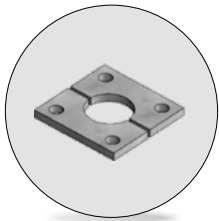
Codice	Materiale
Cod. F3316	Acciaio

OPEL Code	Forma	b	l1	s	OPEL Code	Forma	b	l1	s
F33160157	C	20	60	0,5	F33160169	A	15	40	0,5
F33160158	C	20	60	1	F33160170	A	15	40	1
F33160159	C	20	60	2	F33160171	A	15	40	2
F33160160	A	20	45	0,5	F33160172	A	20	52	0,5
F33160161	A	20	45	1	F33160173	A	20	52	1
F33160162	A	20	45	2	F33160174	A	20	52	2
F33160163	A	15	45	0,5	F33160183	B	12,4	42	0,5
F33160164	A	15	45	1	F33160184	B	12,4	42	1
F33160165	A	15	45	2	F33160185	B	12,4	42	2
F33160166	A	20	40	0,5	F33160186	D	15,8	65	0,5
F33160167	A	20	40	1	F33160187	D	15,8	65	1
F33160168	A	20	40	2	F33160188	D	15,8	65	2

Esempio di ordinazione/Order example = F33160157 (OPEL code)



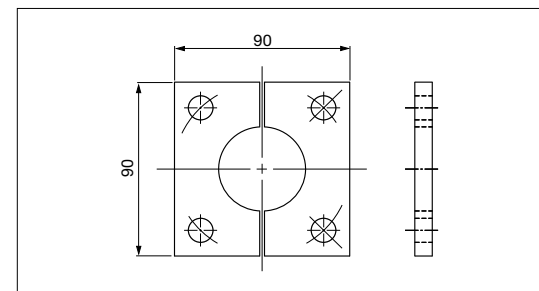
Piastra di ritegno Retaining plate



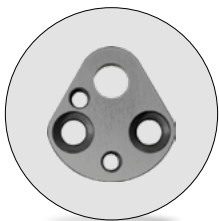
Codice	Materiale
Cod. F3316	St37

OPEL code
F33160218

Esempio di ordinazione/Order example = F33160218 (OPEL code)



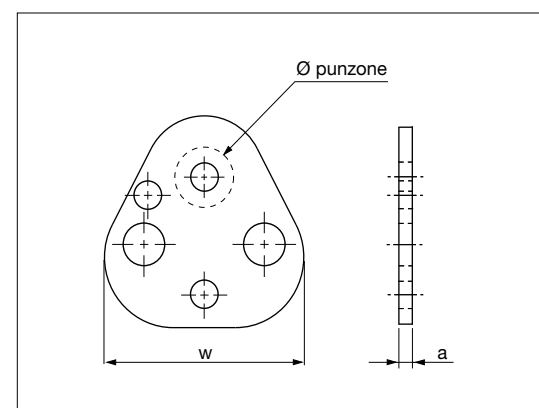
Spessore per portapunzone Shim punch retainer



Codice	Materiale
Cod. F3316	CK45

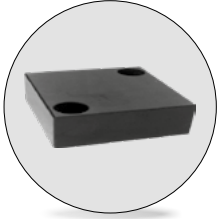
OPEL Code	Ø punzone	a	w	OPEL Code	Ø punzone	a	w
F33160230	10	2	43,7	F33160241	20	6	59,5
F33160231	10	4	43,7	F33160242	25	2	69,1
F33160232	10	6	43,7	F33160243	25	4	69,1
F33160233	13	2	50,0	F33160244	25	6	69,1
F33160234	13	4	50,0	F33160245	32	2	69,1
F33160235	13	6	50,0	F33160246	32	4	69,1
F33160236	16	2	53,2	F33160247	32	6	69,1
F33160237	16	4	53,2	F33160248	40	2	76,7
F33160238	16	6	53,2	F33160249	40	4	76,7
F33160239	20	2	59,5	F33160250	40	6	76,7
F33160240	20	4	59,5				

Esempio di ordinazione/Order example = F33160230 (OPEL code)

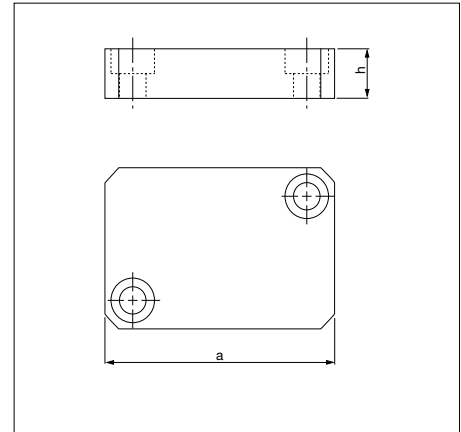




Piastra di reazione *Backing plate*



Codice	Materiale
Cod. F3316	16MnCr5 HRC 60 ÷ 63



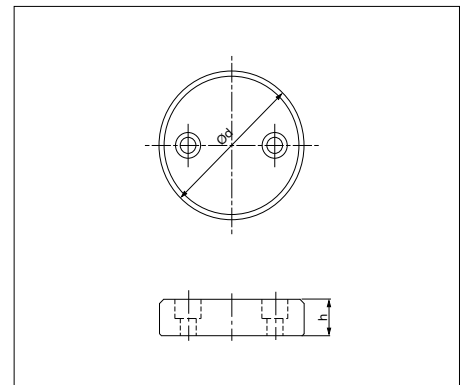
OPEL code	a	h	OPEL code	a	h	OPEL code	a	h
F33160226	50	20	F33160283	95	26	F33160330	95	22
F33160227	80	20	F33160284	95	29	F33160331	95	24
F33160228	95	20	F33160285	95	32	F33160332	95	28
F33160229	110	20	F33160286	95	35	F33160333	110	22
F33160272	50	23	F33160287	110	23	F33160334	110	24
F33160273	50	26	F33160288	110	26	F33160335	110	28
F33160274	50	29	F33160289	110	29	F33160336	130	20
F33160275	50	32	F33160290	110	32	F33160337	130	22
F33160276	50	35	F33160291	110	35	F33160338	130	23
F33160277	80	23	F33160324	50	22	F33160339	130	24
F33160278	80	26	F33160325	50	24	F33160340	130	26
F33160279	80	29	F33160326	50	28	F33160341	130	28
F33160280	80	32	F33160327	80	22	F33160342	130	29
F33160281	80	35	F33160328	80	24	F33160343	130	32
F33160282	95	23	F33160329	80	28	F33160344	130	35

Esempio di ordinazione/Order example = F33160226 (OPEL code)

Piastra di reazione *Backing plate*



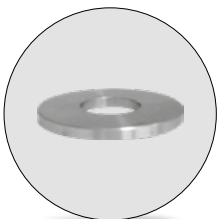
Codice	Materiale
Cod. F3316	42CrMo4 HRC 48 ÷ 55



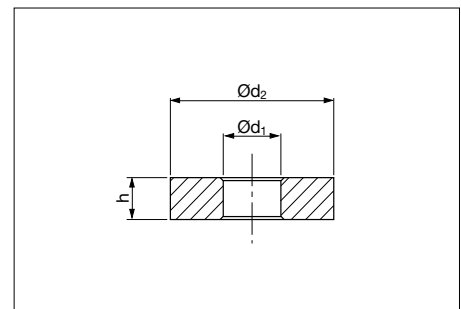
OPEL code	d	h	OPEL code	d	h	OPEL code	d	h
F33160345	63	20	F33160354	101	20	F33160363	133	20
F33160346	63	22	F33160355	101	22	F33160364	133	22
F33160347	63	23	F33160356	101	23	F33160365	133	23
F33160348	63	24	F33160357	101	24	F33160366	133	24
F33160349	63	26	F33160358	101	26	F33160367	133	26
F33160350	63	28	F33160359	101	28	F33160368	133	28
F33160351	63	29	F33160360	101	29	F33160369	133	29
F33160352	63	32	F33160361	101	32	F33160370	133	32
F33160353	63	35	F33160362	101	35	F33160371	133	35

Esempio di ordinazione/Order example = F33160345 (OPEL code)

Rondella *Washer*



Codice	Materiale
Cod. F3318	CK45



OPEL code	d1	d2	h	OPEL code	d1	d2	h
F33180007	6	16	3,5	F33180010	20	40	8
F33180008	12	24,5	5	F33180011	24	50	10
F33180009	16	32	6,5	F33180012	30	60	12

Esempio di ordinazione/Order example = F33180007 (OPEL code)



INDEX



AUTOMOTIVE

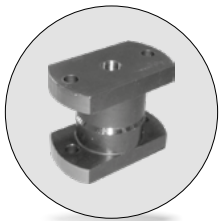
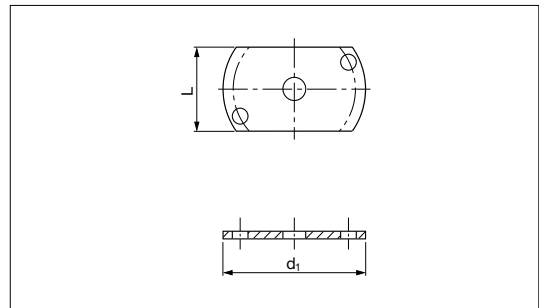


Distanziale *Distance plate*

Codice	Materiale
Cod. F3318	CK45

OPEL code	d1	L
F33180020	105	58
F33180021	125	78

Esempio di ordinazione/Order example = F33180020 (OPEL code)

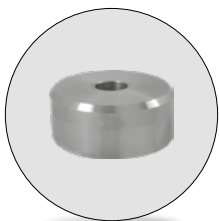
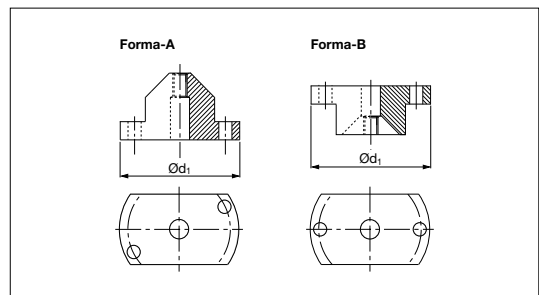


Cono di centraggio *Locating cone*

Codice	Materiale
Cod. F3319	16MnCr5 HRC 60 ÷ 62

OPEL code	Forma	d1	OPEL code	Forma	d1
F33190003	B	100	F33190037	A	100
F33190004	B	120	F33190038	A	120

Esempio di ordinazione/Order example = F33190003 (OPEL code)

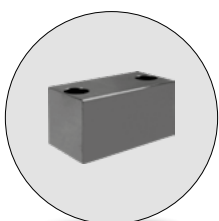
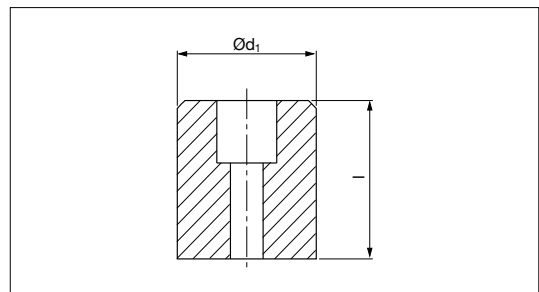


Distanziale *Spacer*

Codice	Materiale
Cod. F3319	CK45

OPEL code	d1	l	OPEL code	d1	l
F33190005	50	50	F33190025	100	50
F33190006	80	50	F33190026	80	160

Esempio di ordinazione/Order example = F33190005 (OPEL code)

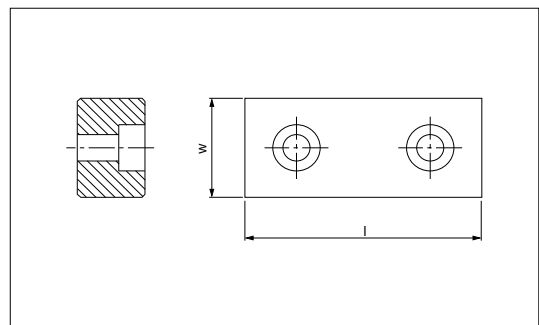


Distanziale *Bottoming blocks*

Codice	Materiale
Cod. F3319	CK45

OPEL code	l	w	OPEL code	l	w
F33190031	100	30	F33190033	80	40
F33190032	100	40	F33190034	100	50

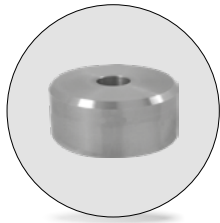
Esempio di ordinazione/Order example = F33190031 (OPEL code)



INDEX

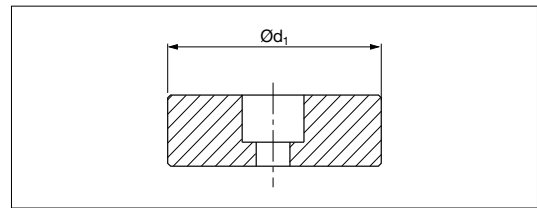


AUTOMOTIVE

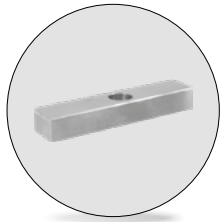


Distanziale *Spacer*

Codice	Materiale
Cod. F3319	CK45
OPEL code	d1
F33190039	50
F33190040	75



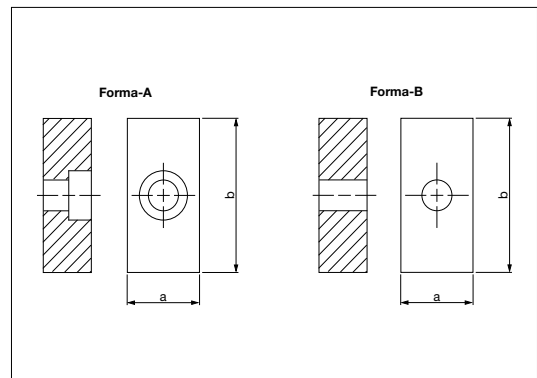
Esempio di ordinazione/Order example = F33190039 (OPEL code)



Chiavetta *Key*

Codice	Materiale
Cod. F3320	CK45

OPEL code	Forma	a	b	OPEL code	Forma	a	b
F33200009	A	22	50	F33200023	B	32	50
F33200010	A	22	80	F33200024	B	32	80
F33200011	A	22	100	F33200025	B	32	100
F33200017	A	20	80	F33200026	A	25	100
F33200018	A	25	50	F33200033	A	32	100
F33200019	A	25	80				



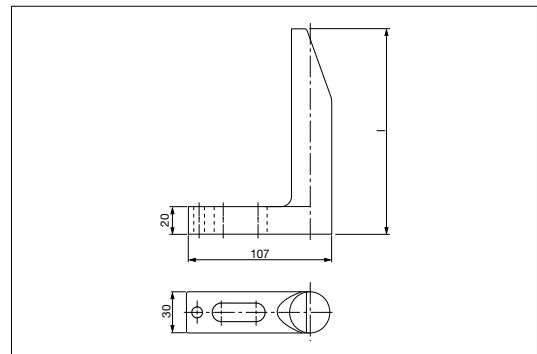
Esempio di ordinazione/Order example = F33200009 (OPEL code)



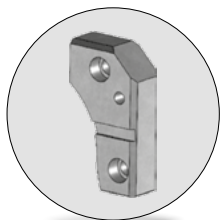
Riferimento *Gage*

Codice	Materiale
Cod. F3326	CK45 HRC 56 ÷ 60

OPEL code	l	OPEL code	l	OPEL code	l
F33260004	65	F33260007	150	F33260396	300
F33260005	90	F33260008	180	F33260397	350
F33260006	120	F33260009	250		



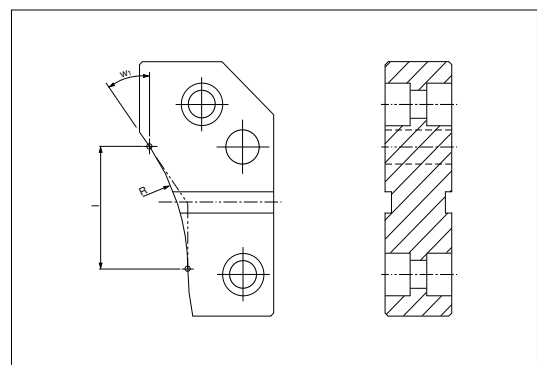
Esempio di ordinazione/Order example = F33260004 (OPEL code)



Camma di accelerazione *Acceleration cam*

Codice	Materiale
Cod. F3326	90MnCrV8 HRC 60 ÷ 62

OPEL code	R	w1	OPEL code	R	w1
F33260014	90	40°	F33260021	75	45°
F33260015	90	37,5°	F33260022	75	47,5°
F33260016	100	37,5°	F33260023	65	50°
F33260017	100	35°	F33260024	65	52,5°
F33260020	75	42,5°			



Esempio di ordinazione/Order example = F33260014 (OPEL code)



INDEX



AUTOMOTIVE



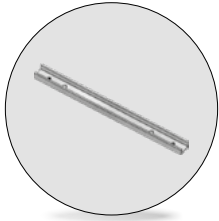
AUTOMOTIVE

Normalizzati per stampi per automotive

Automotive standard parts for die



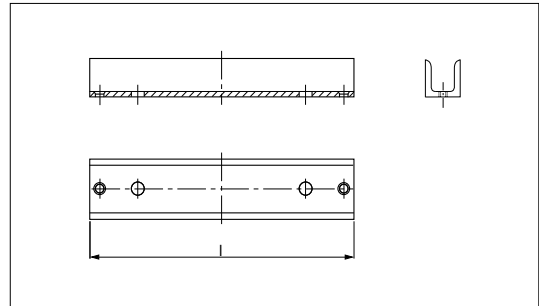
Guida *Guide*



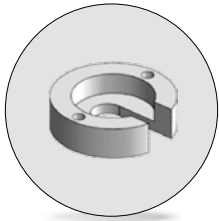
Codice	Materiale
Cod. F3326	Acciaio

OPEL code	I
F33260026	1175
F33260043	420

Esempio di ordinazione/Order example = F33260026 (OPEL code)



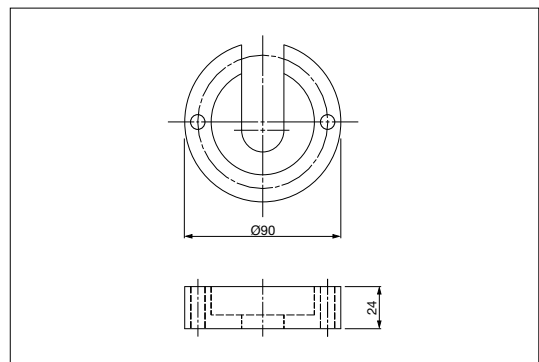
Disco *Disk*



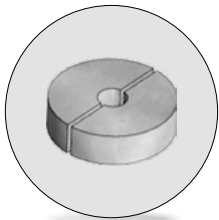
Codice	Materiale
Cod. F3326	CK45

OPEL code
F33260029

Esempio di ordinazione/Order example = F33260029 (OPEL code)



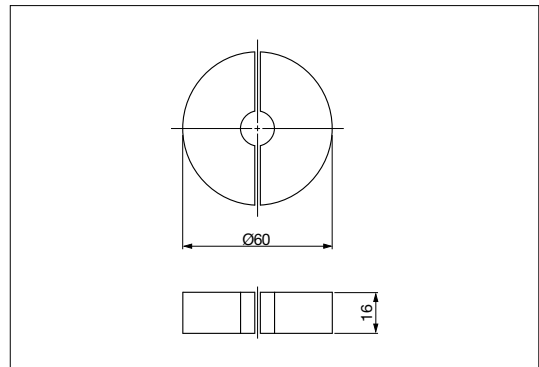
Rondella *Washer*



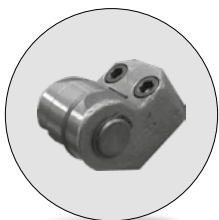
Codice	Materiale
Cod. F3326	CK45

OPEL code
F33260030

Esempio di ordinazione/Order example = F33260030 (OPEL code)



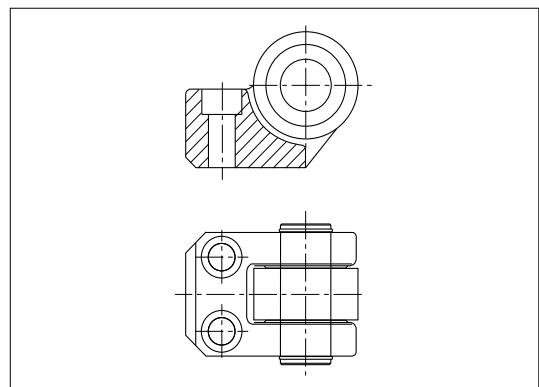
Supporto con rullo *Cam roller*



Codice	Materiale
Cod. F3326	Acciaio

OPEL code
F33260032

Esempio di ordinazione/Order example = F33260032 (OPEL code)



INDEX



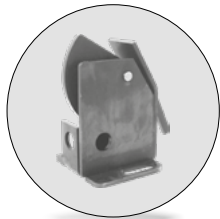
AUTOMOTIVE



AUTOMOTIVE

Normalizzati per stampi per automotive

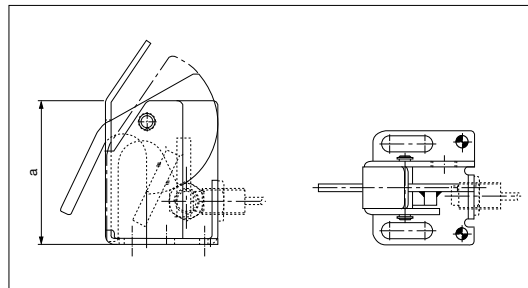
Automotive standard parts for die



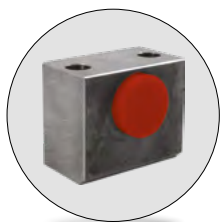
Portasensore *Front gage*

Codice	Materiale
Cod. F3326	Acciaio

OPEL code	a
F33260203	75
F33260204	100
F33260205	150



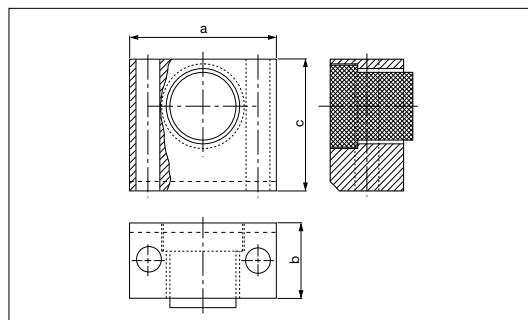
Esempio di ordinazione/Order example = F33260203 (OPEL code)



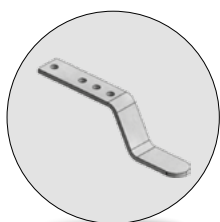
Arresto slitta *Slide stop block*

Codice	Materiale
Cod. F3326	CK45 Elastomero 92 Sh

OPEL code	a	b	c
F33260223	80	80	70
F33260264	80	40	70
F33260342	70	40	60



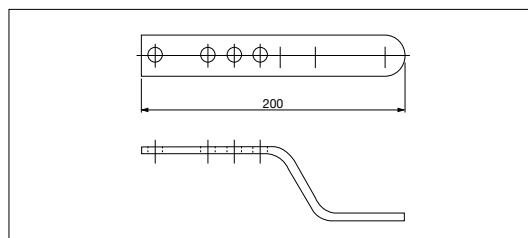
Esempio di ordinazione/Order example = F33260223 (OPEL code)



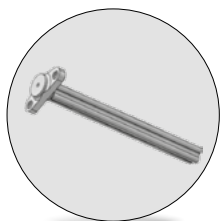
Avvolgitore per cavi elettrici *Coiler for electrical wires*

Codice	Materiale
Cod. F3328	Acciaio

OPEL code
F33280001



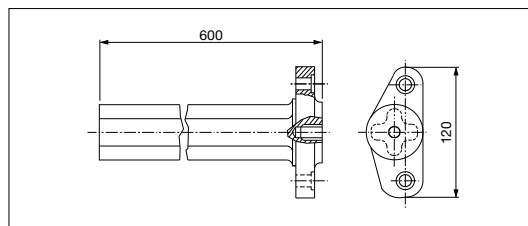
Esempio di ordinazione/Order example = F33280001 (OPEL code)



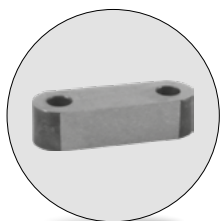
Colonna portatimbrì *Stamp rack pillar*

Codice	Materiale
Cod. F3329	CK45

OPEL code
F33290002



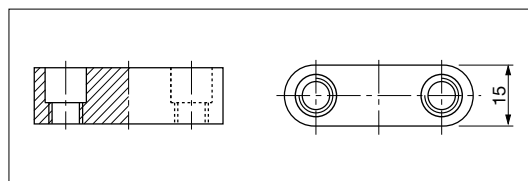
Esempio di ordinazione/Order example = F33290002 (OPEL code)



Piastrina di reazione *Counter pressure plate*

Codice	Materiale
Cod. F3329	Acciaio

OPEL code
F33290041



Esempio di ordinazione/Order example = F33290041 (OPEL code)



INDEX



AUTOMOTIVE



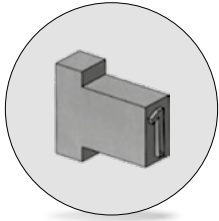
AUTOMOTIVE

Normalizzati per stampi per automotive

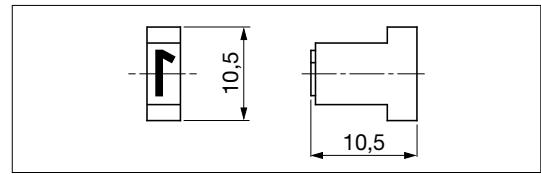
Automotive standard parts for die



Punzone marchio Stamp



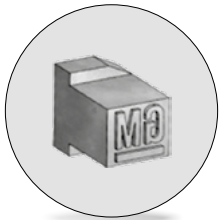
Codice	Materiale
Cod. F3329	90MnCrV8 HRC 60 ÷ 64



OPEL code	Marchio	OPEL code	Marchio	OPEL code	Marchio	OPEL code	Marchio	OPEL code	Marchio
F33290043	0	F33290050	7	F33290146	E	F33290153	M	F33290160	V
F33290044	1	F33290051	8	F33290147	F	F33290154	N	F33290161	W
F33290045	2	F33290052	9	F33290148	G	F33290155	P	F33290162	X
F33290046	3	F33290142	A	F33290149	H	F33290156	R	F33290163	Y
F33290047	4	F33290143	B	F33290150	J	F33290157	S	F33290164	Z
F33290048	5	F33290144	C	F33290151	K	F33290158	T		
F33290049	6	F33290145	D	F33290152	L	F33290159	U		

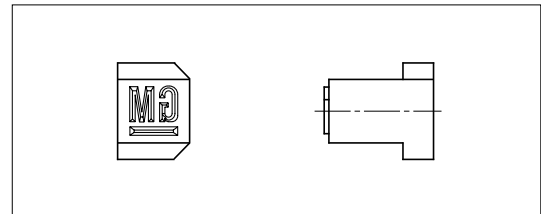
Esempio di ordinazione/Order example = F33290043 (OPEL code)

Punzone marchio Stamp



Codice	Materiale
Cod. F3329	90MnCrV8 HRC 60 ÷ 64

OPEL code
F33290063



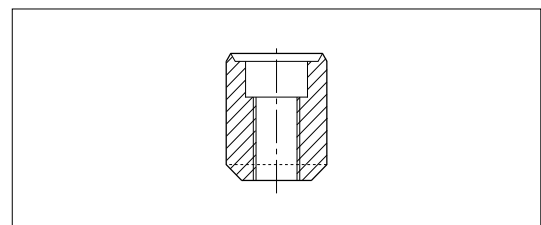
Esempio di ordinazione/Order example = F33290063 (OPEL code)

Punzone di visualizzazione Visual locator punch



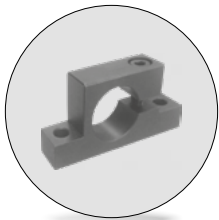
Codice	Materiale
Cod. F3329	X155CrVMo121 HRC 60 ÷ 64

OPEL code
F33290068



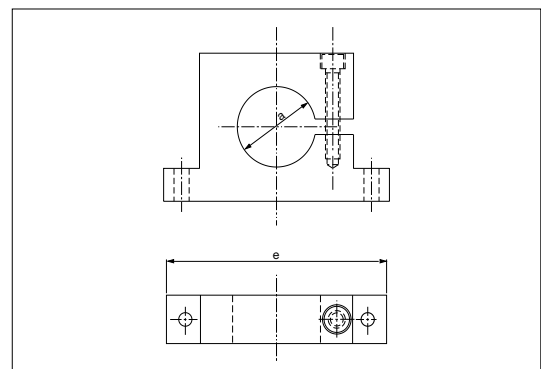
Esempio di ordinazione/Order example = F33290068 (OPEL code)

Supporto molla a gas Gas spring foot mounting



Codice	Materiale
Cod. F3331	Acciaio

OPEL code	a	e	OPEL code	a	e
F33310014	32,35	90	F33310019	95,35	195
F33310015	38,35	95	F33310020	120,35	220
F33310016	45,35	100	F33310021	150,35	260
F33310017	50,35	130	F33310022	195,35	310
F33310018	75,35	160			

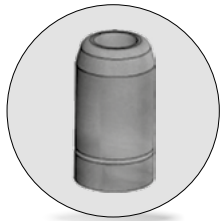


Esempio di ordinazione/Order example = F33310014 (OPEL code)

INDEX

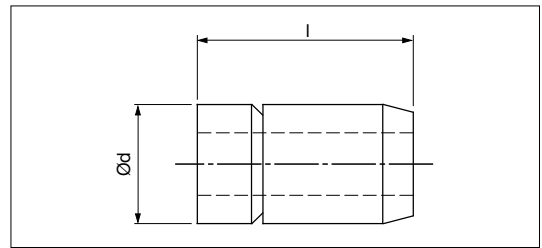
AUTOMOTIVE

CF Torino - È vietata la riproduzione, anche parziale, del presente catalogo.

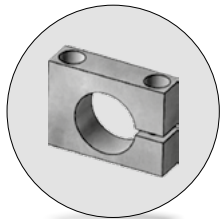


Ritegno per elastometro *Urethane spring retainer*

Codice	Materiale	
Cod. F3331	Acciaio	
OPEL code	d	l
F33310023	16	30
F33310024	24	35



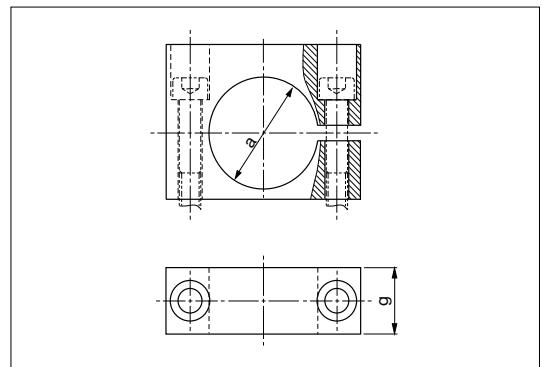
Esempio di ordinazione/Order example = F33310023 (OPEL code)



Supporto per molla a gas *Gas spring foot mounting*

Codice	Materiale
Cod. F3331	CK45

OPEL code	a	g	OPEL code	a	g
F33310029	32,5	20	F33310033	75,5	30
F33310030	38,5	20	F33310034	95,5	30
F33310031	45,5	20	F33310035	120,5	30
F33310032	50,5	30	F33310036	150,5	30

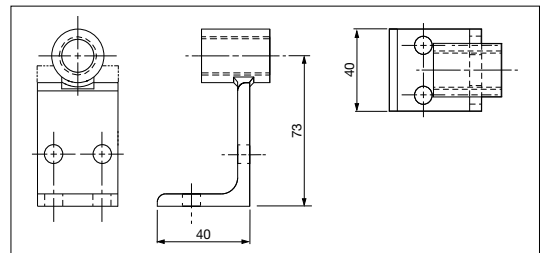


Esempio di ordinazione/Order example = F33310029 (OPEL code)

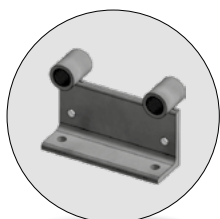


Supporto per innesti rapidi *Air coupling bracket*

Codice	Materiale
Cod. F3391	Acciaio
OPEL code	
F33910001	

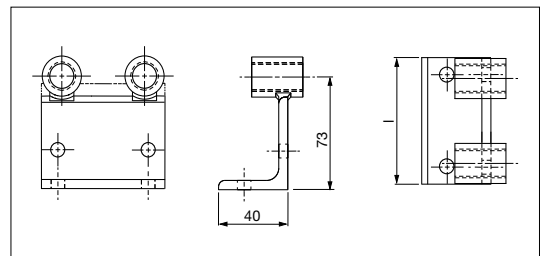


Esempio di ordinazione/Order example = F33910001 (OPEL code)

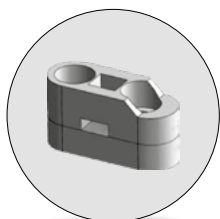


Supporto per innesti rapidi *Air coupling bracket*

Codice	Materiale
Cod. F3391	Acciaio
OPEL code	
F33910002	
F33910003	
l	
82	
125	

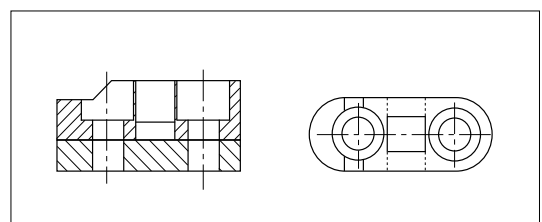


Esempio di ordinazione/Order example = F33910002 (OPEL code)



Portatimbri *Retainer for stamps*

Codice	Materiale
Cod. F3391	Acciaio
OPEL code	
F33910043	



Esempio di ordinazione/Order example = F33910043 (OPEL code)



INDEX



AUTOMOTIVE



AUTOMOTIVE

Normalizzati per stampi per automotive

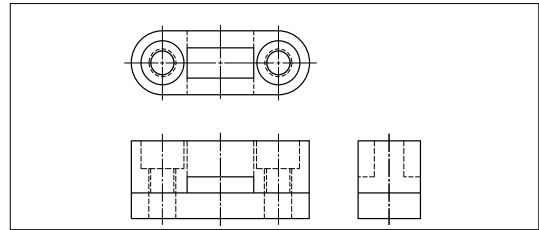
Automotive standard parts for die



Portatimbri *Retainer for stamps*

Codice	Materiale
Cod. F3391	CK45

OPEL code
F33910044



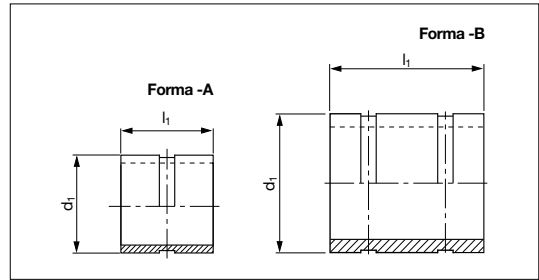
Esempio di ordinazione/Order example = F33910044 (OPEL code)



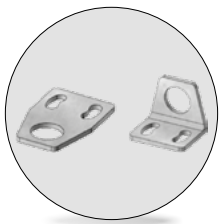
Boccola per perno di sollevamento *Bush for lifting pins*

Codice	Materiale
Cod. F3391	St37

OPEL code	Forma	d1	l1
F33910110	A	44	40
F33910111	A	52	50
F33910112	A	62	60
F33910113	A	75	80
F33910115	B	100	100



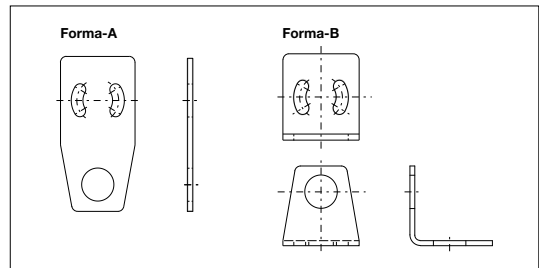
Esempio di ordinazione/Order example = F33910110 (OPEL code)



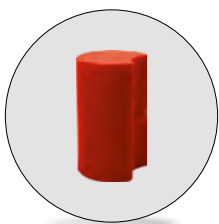
Staffa per sensori *Sensor mounting bracket*

Codice	Materiale
Cod. J0691	Acciaio

OPEL code	Forma
J06910069	A
J06910070	B



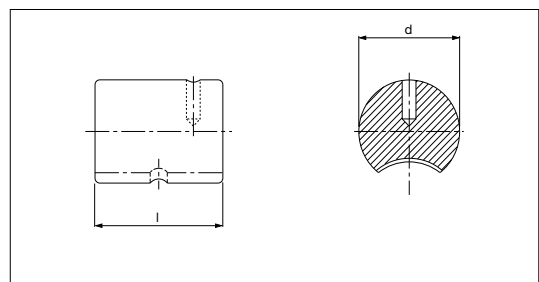
Esempio di ordinazione/Order example = J06910069 (OPEL code)



Ammortizzatore *Shock absorber*

Codice	Materiale
Cod. M1604	Elastomero 92 SH

OPEL code	d	l
M16045182	40	60
M16045183	50	80
M16045184	63	80



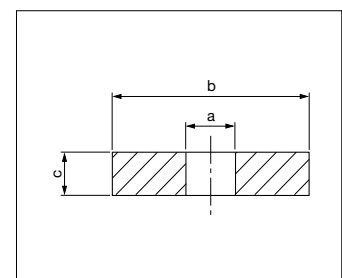
Esempio di ordinazione/Order example = M16045182 (OPEL code)



Rondella *Washer*

Codice	Materiale
Cod. M3660	CK45

OPEL code	a	b	c	OPEL code	a	b	c
M36600070	8,4	21	4	M36600072	13	30	6
M36600071	10,5	25	4	M36600073	17	40	6



Esempio di ordinazione/Order example = M36600070 (OPEL code)



INDEX

CF Torino - È vietata la riproduzione, anche parziale, del presente catalogo.

AUTOMOTIVE