



AUTOMOTIVE
Normalizzati per stampi per automotive

Automotive standard parts for die



Standard parts



| | | | | | | |
|----------------------------------------------------------------------------------------------------------------------------------------------------------------------------------------|------------------------------------------------------------------------------------------------------------------------------------------------------------------------------------------------------------------------------------|--------------------------------------------------------------------------------------------------------------------------------------------------------------------------------------------------------|-----------------------------------------------------------------------------------------------------------------------------------------------------------------------------------------------------------------------------|------------------------------------------------------------------------------------------------------------------------------------------------------------------------------------------------------------------|--------------------------------------------------------------------------------------------------------------------------------------------------------------------------------------------------------------------------------|---------------------------------------------------------------------------------------------------------------------------------------------------------------------------------------------------------------------------|
| <p>EM24.50.400/D</p>  <p>Perno di sollevamento <i>Lifting pins</i></p> <p>pag. 7.RE.3</p> | <p>EM24.50.400/F</p>  <p>Staffa di sollevamento completa di perno e chiavette <i>Lifting brackets with pins</i></p> <p>pag. 7.RE.3</p> | <p>EM24.52.100/J</p>  <p>Colonna guida <i>Guide post</i></p> <p>pag. 7.RE.3</p> | <p>EM24.52.100/J</p>  <p>Anello di tenuta AFNOR <i>Guide post retainer ring</i></p> <p>pag. 7.RE.4</p> | <p>EM24.52.100/J</p>  <p>Ritegno per colonna AFNOR <i>Flange for median retaining column</i></p> <p>pag. 7.RE.4</p> | <p>EM24.52.100/J</p>  <p>Boccola autolubrificante AFNOR <i>Guide bushes with collar, self-lubricating</i></p> <p>pag. 7.RE.4</p> | <p>EM24.52.100/J</p>  <p>Boccola con rigature per l'olio <i>Guide bushes with collar, oil groove</i></p> <p>pag. 7.RE.4</p> |
| <p>EM24.52.100/J</p>  <p>Ritegno per boccola AFNOR <i>Toe clamp</i></p> <p>pag. 7.RE.5</p> | <p>EM24.52.100/J</p>  <p>Ritegno per boccola <i>Toe clamp</i></p> <p>pag. 7.RE.5</p> | <p>EM24.52.100/J</p>  <p>Cono di centraggio <i>Locating cone</i></p> <p>pag. 7.RE.5</p> | <p>EM24.52.300/C</p>  <p>Piastra guida autolubrificante AFNOR <i>Wear plates, self-lubricating AFNOR</i></p> <p>pag. 7.RE.5</p> | <p>EM24.52.300/C</p>  <p>Piastra guida in acciaio AFNOR <i>Wear plates, steel AFNOR</i></p> <p>pag. 7.RE.6</p> | <p>EM24.52.500/B</p>  <p>Guida angolare <i>"L" shaped wear plates, self-lubricating</i></p> <p>pag. 7.RE.6</p> | <p>EM24.52.500/B</p>  <p>Guida <i>Slider</i></p> <p>pag. 7.RE.6</p> |
| <p>EM24.55.100/G</p>  <p>Perno di arresto <i>Pad retainer pins</i></p> <p>pag. 7.RE.7</p> | <p>EM24.55.100/G</p>  <p>Perno di arresto <i>Pad retainer pins</i></p> <p>pag. 7.RE.7</p> | <p>EM24.52.500/B</p>  <p>Ammortizzatore <i>Shock absorber for pad retainer pins</i></p> <p>pag. 7.RE.7</p> | <p>EM24.59.500/J</p>  <p>Punzone di visualizzazione <i>Visual locator setting punch</i></p> <p>pag. 7.RE.8</p> | <p>EM24.59.500/I</p>  <p>Portatimbri <i>Stamp retainer</i></p> <p>pag. 7.RE.8</p> | <p>EM24.59.500/I</p>  <p>Distanziale <i>Backing plate</i></p> <p>pag. 7.RE.8</p> | <p>EM24.59.500/J</p>  <p>Punzone marchio <i>Stamp</i></p> <p>pag. 7.RE.9</p> |
| <p>EM24.59.500/J</p>  <p>Punzone marchio <i>Stamp</i></p> <p>pag. 7.RE.9</p> | | | | | | |
| | | | | | | |
| | | | | | | |
| | | | | | | |
| | | | | | | |
| | | | | | | |
| | | | | | | |
| | | | | | | |
| | | | | | | |
| | | | | | | |
| | | | | | | |
| | | | | | | |
| | | | | | | |
| | | | | | | |
| | | | | | | |



AUTOMOTIVE

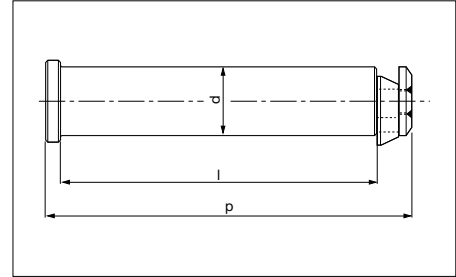


Perno di sollevamento *Lifting pins*



| | |
|---------------------------|------------------|
| Codice | Materiale |
| Cod. EM24.50.400/D | CK45 |

Per sicurezza, il peso dello stampo deve essere supportato da 2 soli perni.
For safety, consider that the weight of the die has to be supported just by 2 lifting pins.

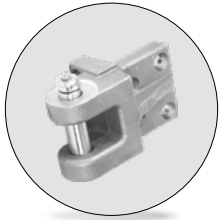


| RENAULT code | Carico max (Kg) | Peso max dello stampo (Kg) | d | l | p |
|--------------|-----------------|----------------------------|----|-----|--------|
| R100.609.710 | 6000 | 12000 | 32 | 132 | 154 |
| R100.609.711 | 9000 | 18000 | 40 | 170 | 197,75 |
| R100.448.866 | 14000 | 28000 | 50 | 212 | 247,60 |
| R100.448.712 | 22500 | 45000 | 63 | 265 | 309 |

Esempio di ordinazione/Order example = R100.609.710 (RENAULT code)

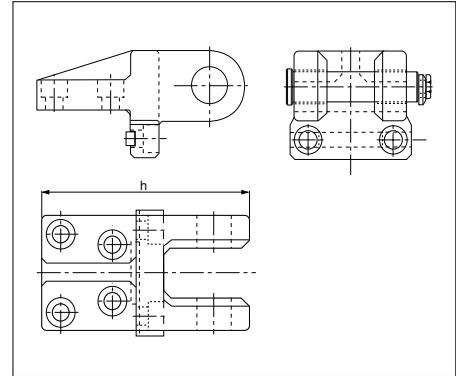
Rispettare il carico max. *Respect the max load.*

Staffa di sollevamento completa di perno e chiavette *Lifting brackets with pins*



| | |
|---------------------------|--------------------------------------|
| Codice | Materiale |
| Cod. EM24.50.400/F | CK45 800 ÷ 1000 N/mm ² |

Per sicurezza, il peso dello stampo deve essere supportato da 2 sole staffe.
For safety, consider that the weight of the die has to be supported just by 2 brackets.



| RENAULT code | Carico max (Kg) | Peso max dello stampo (Kg) | h |
|---------------|-----------------|----------------------------|-----|
| P 953 548 270 | 4000 | 8000 | 221 |
| P 953 549 070 | 6300 | 12600 | 270 |

Esempio di ordinazione/Order example = P 953 548 270 (RENAULT code)

Rispettare il carico max. *Respect the max load.*

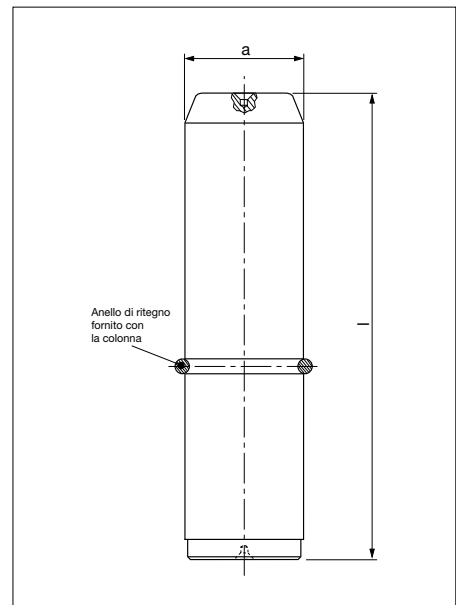
INDEX

Colonna guida *Guide post*



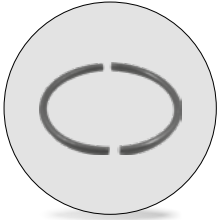
| | |
|---------------------------|------------------------|
| Codice | Materiale |
| Cod. EM24.52.100/J | 16MnCr5 HRC 60 ÷ 62 |

| RENAULT code | a | l |
|--------------|-----|-----|
| R100 018 363 | 25 | 125 |
| P446 116 817 | 32 | 140 |
| P446 116 815 | 32 | 160 |
| P446 116 816 | 32 | 200 |
| P446 118 100 | 50 | 224 |
| P446 118 101 | 50 | 280 |
| P446 118 701 | 63 | 250 |
| P446 118 707 | 63 | 280 |
| P446 118 702 | 63 | 315 |
| P446 119 200 | 80 | 315 |
| P446 119 201 | 80 | 355 |
| R100 221 692 | 80 | 400 |
| P446 119 800 | 100 | 400 |
| P446 119 801 | 100 | 450 |

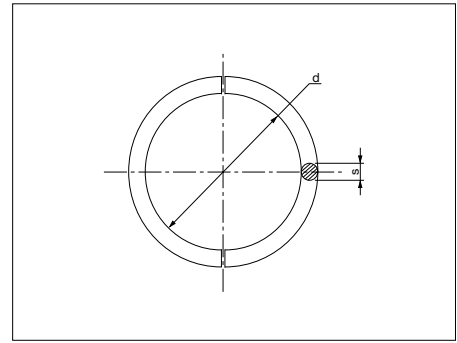


Esempio di ordinazione/Order example = R100 018 363 (Renault code)

Anello di tenuta AFNOR *Guide post retainer ring*



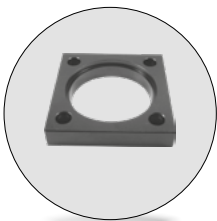
| | |
|---------------------------|------------------|
| Codice | Materiale |
| Cod. EM24.52.100/J | CK45 |



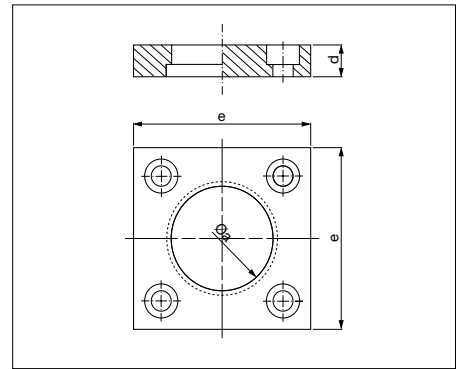
| RENAULT code | d | s | Per Ø colonna | RENAULT code | d | s | Per Ø colonna |
|--------------|------|-----|---------------|--------------|----|---|---------------|
| P446 180 100 | 17,5 | 2,5 | 20 | P446 180 500 | 46 | 4 | 50 |
| P446 180 200 | 22,5 | 2,5 | 25 | P446 180 600 | 57 | 6 | 63 |
| P446 180 300 | 28 | 4 | 32 | P446 180 700 | 74 | 6 | 80 |
| P446 180 400 | 36 | 4 | 40 | P446 180 800 | 94 | 6 | 100 |

Esempio di ordinazione/Order example = P446 180 100 (Renault code)

Ritegno per colonna AFNOR *Flange for median retaining column*



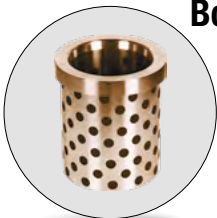
| | |
|---------------------------|------------------|
| Codice | Materiale |
| Cod. EM24.52.100/J | CK45 |



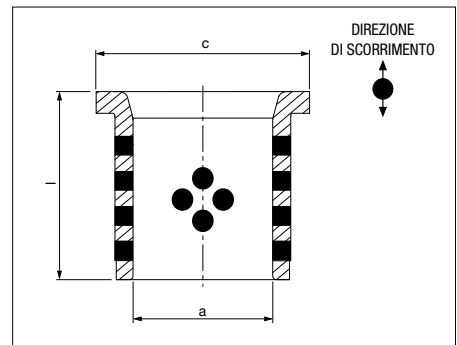
| RENAULT code | a | d | e | RENAULT code | a | d | e |
|--------------|----|----|----|--------------|-----|----|-----|
| P483 763 900 | 20 | 10 | 40 | P483 795 401 | 50 | 14 | 80 |
| P483 784 100 | 25 | 10 | 45 | P483 795 801 | 63 | 18 | 100 |
| P483 784 600 | 32 | 10 | 56 | P483 796 001 | 80 | 20 | 110 |
| P483 795 100 | 40 | 12 | 70 | P483 796 401 | 100 | 20 | 140 |

Esempio di ordinazione/Order example = P483 763 900 (Renault code)

Boccola autolubrificante AFNOR *Guide bushes with collar, self-lubricating*



| | |
|---------------------------|------------------------------|
| Codice | Materiale |
| Cod. EM24.52.100/J | Bronzo + grafite HB ≥ 190 |



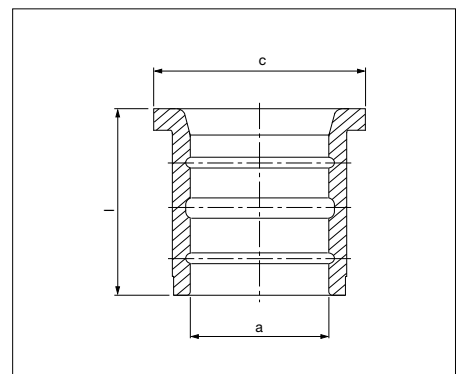
| RENAULT code | a | c | l | RENAULT code | a | d | e |
|--------------|----|----|-----|--------------|-----|-----|-----|
| M764 539 401 | 40 | 60 | 63 | M764 554 601 | 80 | 112 | 125 |
| M764 544 501 | 50 | 71 | 80 | X345 298 500 | 100 | 140 | 160 |
| M764 549 501 | 63 | 90 | 100 | | | | |

Esempio di ordinazione/Order example = M764 539 401 (Renault code)

Boccola con rigatura per l'olio *Guide bushes with collar, oil groove*



| | |
|---------------------------|-----------------------------------------------|
| Codice | Materiale |
| Cod. EM24.52.100/J | Bronzo con rigature per l'olio HB ≥ 190 |



| RENAULT code | a | c | l | RENAULT code | a | d | e |
|--------------|----|----|----|--------------|-----|-----|-----|
| M255 334 301 | 20 | 32 | 32 | M256 451 501 | 50 | 71 | 80 |
| M255 339 301 | 25 | 40 | 40 | M256 456 502 | 63 | 90 | 100 |
| M256 444 401 | 32 | 50 | 50 | M256 460 602 | 80 | 112 | 125 |
| M256 447 401 | 40 | 60 | 63 | X345 098 407 | 100 | 140 | 160 |

Esempio di ordinazione/Order example = M255 334 301 (Renault code)



INDEX

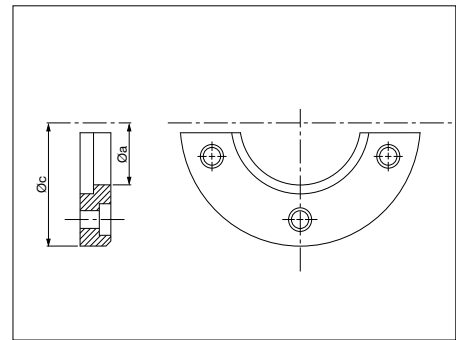


AUTOMOTIVE

Ritegno per boccia AFNOR *Toe clamp*



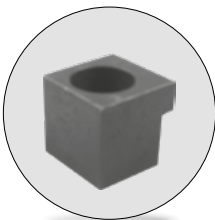
| | |
|---------------------------|------------------|
| Codice | Materiale |
| Cod. EM24.52.100/J | CK45 |



| RENAULT code | a | c | Ø boccia | RENAULT code | a | c | Ø boccia |
|--------------|----|-----|----------|--------------|-----|-----|----------|
| M321 530 400 | 25 | 63 | 20 | M321 552 601 | 63 | 125 | 50 |
| M321 534 500 | 32 | 72 | 25 | M321 556 601 | 80 | 140 | 63 |
| M321 544 501 | 40 | 80 | 32 | M321 560 601 | 100 | 180 | 80 |
| M321 548 501 | 50 | 100 | 40 | M321 562 700 | 125 | 200 | 100 |

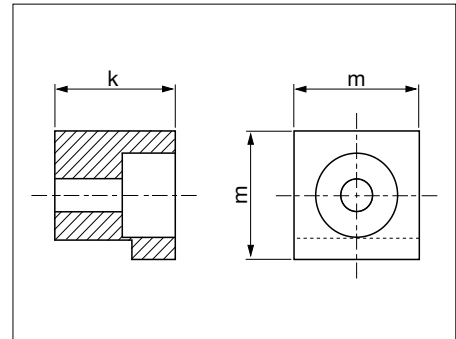
Esempio di ordinazione/Order example = M321 530 400 (Renault code)

Ritegno per boccia *Toe clamp*



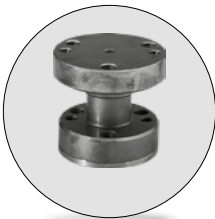
| | |
|---------------------------|------------------|
| Codice | Materiale |
| Cod. EM24.52.100/J | CK45 |

| RENAULT code | k | m |
|--------------|----|----|
| R100 171 981 | 12 | 18 |
| R100 171 995 | 16 | 22 |
| R100 171 998 | 20 | 26 |
| R100 172 000 | 25 | 26 |
| R100 172 001 | 32 | 26 |



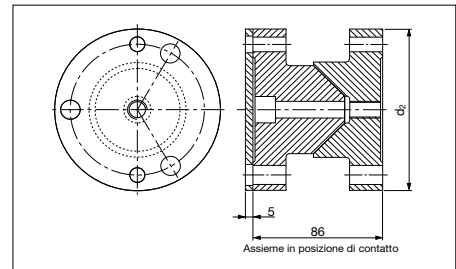
Esempio di ordinazione/Order example = R100 171 981 (Renault code)

Cono di centraggio *Locating cone*



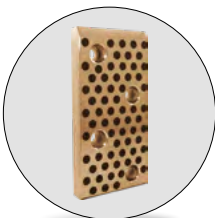
| | |
|---------------------------|--------------------------------------------------------|
| Codice | Materiale |
| Cod. EM24.52.100/J | Cono: X155CrMoV12 T6 HRC 56 - 58 Piastra: 100Cr6 |

| RENAULT code | d2 |
|--------------|-----|
| R901 138 222 | 90 |
| R901 138 223 | 110 |



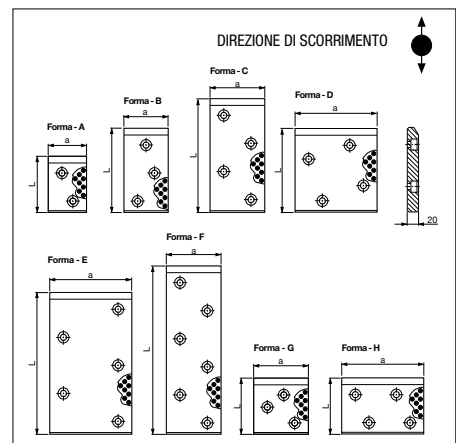
Esempio di ordinazione/Order example = R901 138 222 (Renault code)

Piastra guida autolubrificante AFNOR *Wear plates, self-lubricating*



| | |
|---------------------------|------------------------------|
| Codice | Materiale |
| Cod. EM24.52.300/C | Bronzo + grafite HB ≥ 190 |

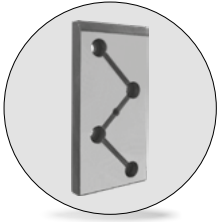
| RENAULT code | Forma | a | l | RENAULT code | Forma | a | l |
|--------------|-------|-----|-----|--------------|-------|-----|-----|
| R100 092 843 | A | 70 | 100 | R100 092 886 | F | 100 | 300 |
| R100 092 844 | B | 70 | 150 | R100 092 887 | H | 150 | 100 |
| R100 092 845 | C | 70 | 200 | R100 092 888 | D | 150 | 150 |
| R100 092 846 | G | 100 | 100 | R100 092 890 | C | 150 | 200 |
| R100 092 883 | D | 100 | 150 | R100 092 893 | E | 150 | 250 |
| R100 092 884 | C | 100 | 200 | R100 092 894 | F | 150 | 300 |
| R100 092 885 | E | 100 | 250 | R100 092 895 | H | 200 | 100 |



Esempio di ordinazione/Order example = R100 092 843 (Renault code)

INDEX

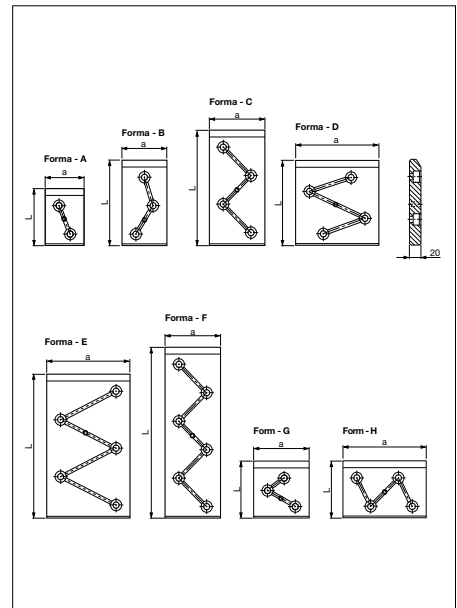
AUTOMOTIVE



Piastra guida in acciaio AFNOR *Wear plates, steel AFNOR*

| | |
|---------------------------|------------------------|
| Codice | Materiale |
| Cod. EM24.52.300/C | 16MnCr5 HRC 58 ÷ 60 |

| RENAULT code | Forma | a | L |
|--------------|-------|-----|-----|
| P446 625 854 | A | 70 | 100 |
| P446 626 558 | B | 70 | 150 |
| P446 627 059 | C | 70 | 200 |
| P446 625 855 | G | 100 | 100 |
| P446 626 559 | D | 100 | 150 |
| P446 627 060 | C | 100 | 200 |
| P446 627 454 | E | 100 | 250 |
| P446 627 754 | F | 100 | 300 |
| P446 626 560 | H | 150 | 100 |
| P446 626 561 | D | 150 | 150 |
| P446 627 061 | C | 150 | 200 |
| P446 627 455 | E | 150 | 250 |
| P446 627 755 | F | 150 | 300 |
| P446 627 062 | H | 200 | 100 |



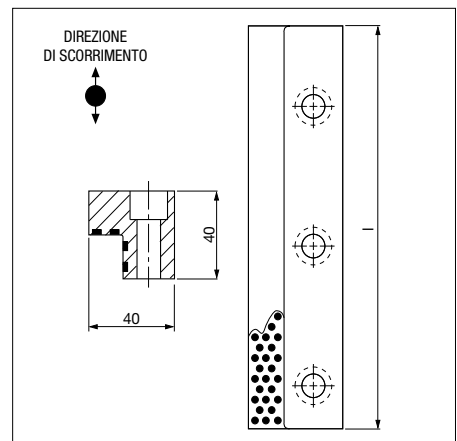
Esempio di ordinazione/Order example = P446 625 854 (Renault code)



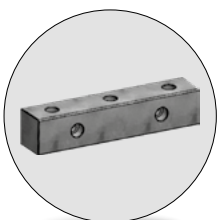
Guida angolare "L" shaped wear plates, self-lubricating

| | |
|---------------------------|------------------------------|
| Codice | Materiale |
| Cod. EM24.52.500/B | Bronzo + grafite HB ≥ 190 |

| RENAULT code | l | Fori |
|--------------|-----|------|
| M764 523 701 | 250 | 3 |
| M764 523 702 | 160 | 2 |



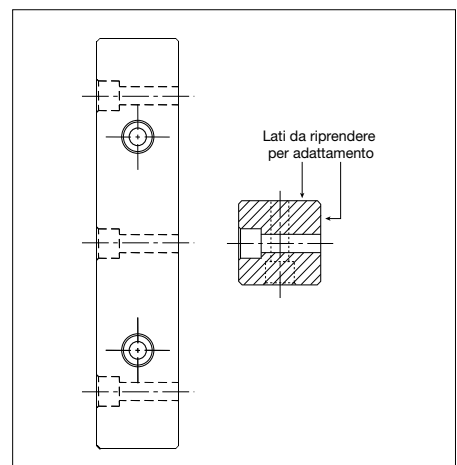
Esempio di ordinazione/Order example = M764 523 701 (Renault code)



Guida *Slider*

| | |
|---------------------------|------------------------|
| Codice | Materiale |
| Cod. EM24.52.500/B | 16MnCr5 HRC 60 ÷ 62 |

| RENAULT code |
|--------------|
| A07.20.50250 |



Esempio di ordinazione/Order example = A07.20.50250 (Renault code)



INDEX



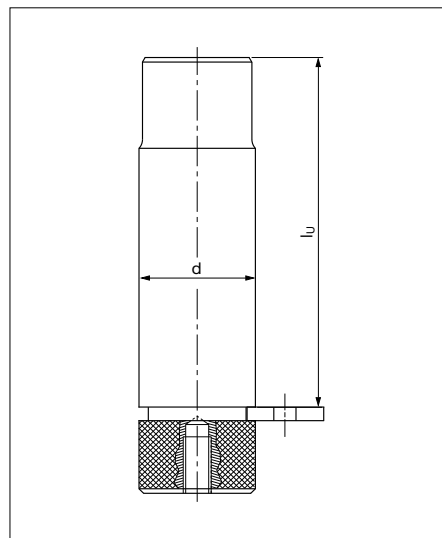
AUTOMOTIVE

Perno di arresto *Pad retainer pins*



| | |
|---------------------------|------------------|
| Codice | Materiale |
| Cod. EM24.55.100/G | CK45 |

| RENAULT code | d | lu |
|--------------|----|-----|
| R100 306 188 | 20 | 81 |
| R100 306 190 | 25 | 81 |
| R100 306 191 | 25 | 98 |
| R100 306 194 | 32 | 103 |
| R100 306 198 | 32 | 148 |
| R100 306 201 | 40 | 132 |
| R100 306 204 | 40 | 192 |
| R100 306 207 | 50 | 165 |
| R100 306 209 | 50 | 220 |
| R100 306 210 | 63 | 210 |
| R100 306 213 | 63 | 250 |
| R100 357 232 | 80 | 210 |



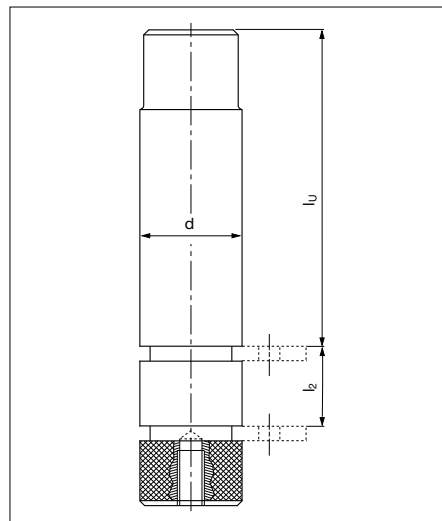
Esempio di ordinazione/Order example = R100 306 188 (Renault code)

Perno di arresto *Pad retainer pins*



| | |
|---------------------------|------------------|
| Codice | Materiale |
| Cod. EM24.55.100/G | CK45 |

| RENAULT code | d | lu | l2 |
|--------------|----|-----|----|
| R100 306 215 | 25 | 81 | 20 |
| R100 306 217 | 25 | 98 | 20 |
| R100 306 218 | 32 | 103 | 25 |
| R100 306 219 | 32 | 148 | 25 |
| R100 306 220 | 40 | 132 | 32 |
| R100 306 221 | 40 | 192 | 32 |
| R100 306 223 | 50 | 165 | 40 |
| R100 306 225 | 50 | 220 | 40 |
| R100 306 226 | 63 | 210 | 50 |
| R100 306 227 | 63 | 250 | 50 |



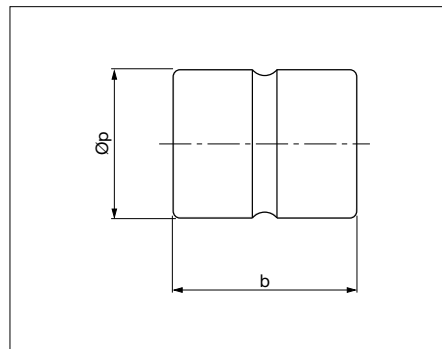
Esempio di ordinazione/Order example = R100 306 215 (Renault code)

Ammortizzatore *Shock absorber for pad retainer pins*



| | |
|---------------------------|------------------|
| Codice | Materiale |
| Cod. EM24.52.100/G | Elastomero 92 SH |

| RENAULT code | b | p |
|--------------|----|----|
| X346 566 000 | 45 | 25 |
| X346 566 801 | 50 | 32 |
| X346 567 400 | 60 | 40 |
| X346 568 100 | 70 | 50 |
| X346 568 700 | 80 | 63 |
| X346 569 201 | 90 | 80 |



Esempio di ordinazione/Order example = X346 566 000 (Renault code)



INDEX

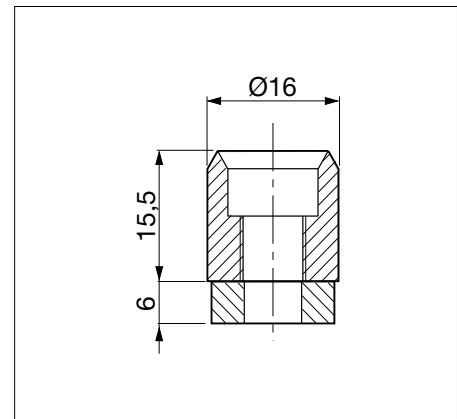


AUTOMOTIVE

Punzone di visualizzazione *Visual locator setting punch*



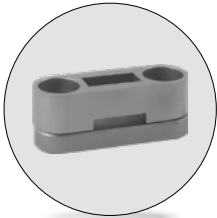
| | |
|---------------------------|-------------------------------------------------|
| Codice | Materiale |
| Cod. EM24.59.500/J | X153CrMoV12 T6 HRC 58 - 62 Rondella: CK45 |



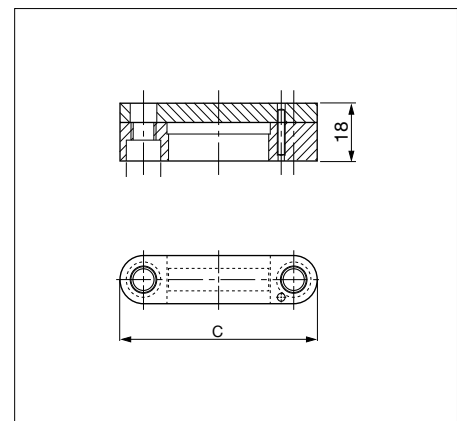
| |
|---------------------|
| RENAULT code |
| P785 283 005 |

Esempio di ordinazione/Order example = P785 283 005 (Renault code)

Portatimברי *Stamp retainer*



| | |
|---------------------------|------------------|
| Codice | Materiale |
| Cod. EM24.59.500/I | CK45 |



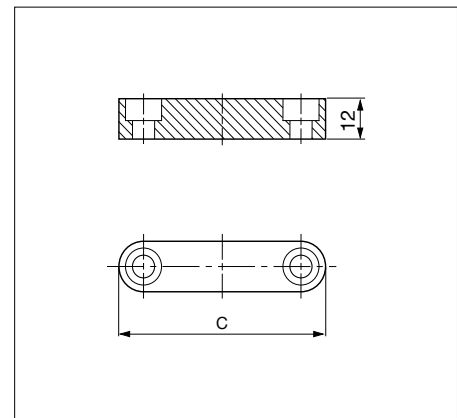
| RENAULT code | c | N° punzoni spessore 2 mm | N° punzoni spessore 4 mm |
|--------------|----|--------------------------|--------------------------|
| R100 050 232 | 47 | 8 | 4 |
| R100 197 803 | 55 | 12 | 6 |
| R100 050 234 | 63 | 16 | 8 |
| R100 352 214 | 71 | 20 | 10 |

Esempio di ordinazione/Order example = R100 050 232 (Renault code)

Distanziale *Backing plate*



| | |
|---------------------------|------------------|
| Codice | Materiale |
| Cod. EM24.59.500/I | CK45 |



| RENAULT code | c | N° punzoni spessore 2 mm | N° punzoni spessore 4 mm |
|--------------|----|--------------------------|--------------------------|
| R100 050 235 | 47 | 8 | 4 |
| R100 197 805 | 55 | 12 | 6 |
| R100 050 236 | 63 | 16 | 8 |
| R100 352 230 | 71 | 20 | 10 |

Esempio di ordinazione/Order example = R100 050 235 (Renault code)



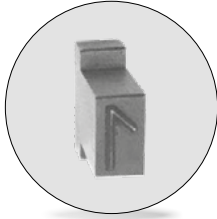
INDEX



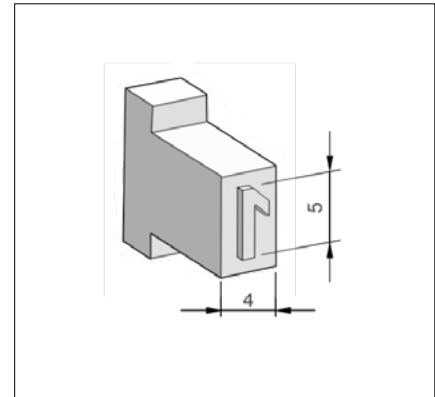
AUTOMOTIVE

Automotive standard parts for die

Punzone marchio Stamp



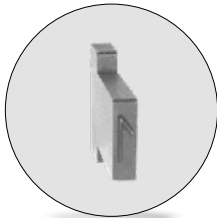
| | |
|---------------------------|----------------------------|
| Codice | Materiale |
| Cod. EM24.59.500/J | X153CrMoV12 HRC 54 ÷ 56 |



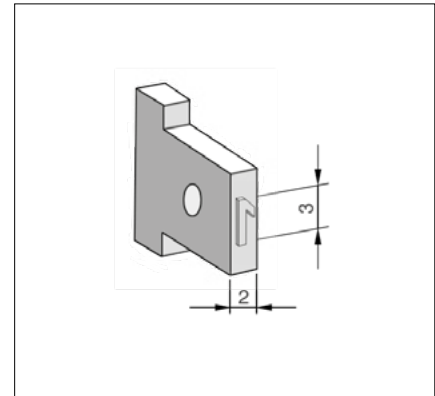
| RENAULT code | marchio | RENAULT code | marchio |
|--------------|---------|--------------|---------|
| P785 150 002 | 0 | P785 152 202 | J |
| P785 150 102 | 1 | P785 152 302 | K |
| P785 150 202 | 2 | P785 152 402 | L |
| P785 150 302 | 3 | P785 152 503 | M |
| P785 150 402 | 4 | P785 152 602 | N |
| P785 150 502 | 5 | P785 150 002 | O |
| P785 150 602 | 6 o 9 | P785 152 802 | P |
| P785 150 702 | 7 | P785 152 902 | Q |
| P785 150 802 | 8 | P785 153 002 | R |
| P785 289 002 | Spazio | P785 153 102 | S |
| P785 151 302 | A | P785 153 202 | T |
| P785 151 402 | B | P785 153 302 | U |
| P785 151 502 | C | P785 153 402 | V |
| P785 151 602 | D | P785 153 502 | W |
| P785 151 702 | E | P785 153 602 | X |
| P785 151 802 | F | P785 153 702 | Y |
| P785 151 902 | G | P785 153 802 | Z |
| P785 152 002 | H | | |

Esempio di ordinazione/Order example = P785 150 002 (Renault code)

Punzone marchio Stamp



| | |
|---------------------------|----------------------------|
| Codice | Materiale |
| Cod. EM24.59.500/J | X153CrMoV12 HRC 54 ÷ 56 |



| RENAULT code | marchio | RENAULT code | marchio |
|--------------|---------|--------------|---------|
| P785 154 003 | 0 | P785 155 308 | J |
| P785 154 103 | 1 | P785 155 309 | K |
| P785 154 203 | 2 | P785 155 310 | L |
| P785 154 303 | 3 | P785 155 311 | M |
| P785 154 403 | 4 | P785 155 312 | N |
| P785 154 503 | 5 | P785 155 313 | O |
| P785 154 603 | 6 o 9 | P785 155 314 | P |
| P785 154 703 | 7 | P785 140 950 | Q |
| P785 154 803 | 8 | P785 140 951 | R |
| P785 155 003 | Spazio | P785 140 952 | S |
| P785 155 300 | A | P785 140 953 | T |
| P785 155 301 | B | P785 140 954 | U |
| P785 155 302 | C | P785 140 955 | V |
| P785 155 303 | D | P785 140 956 | W |
| P785 155 304 | E | P785 140 957 | X |
| P785 155 305 | F | P785 140 958 | Y |
| P785 155 306 | G | P785 140 959 | Z |
| P785 155 307 | H | | |

Esempio di ordinazione/Order example = P785 154 003 (Renault code)



INDEX